

TM 5-4310-339-25P

DEPARTMENT OF THE ARMY TECHNICAL MANUAL

ORGANIZATIONAL, DIRECT AND GENERAL SUPPORT,
AND DEPOT MAINTENANCE
REPAIR PARTS AND SPECIAL TOOL LIST

COMPRESSOR, RECIPROCATING, AIR, 15 CFM, 175 PSI, ELECTRIC
MOTOR DRIVEN (INGERSOLL-RAND MODEL 242D7-½)
FSN 4310-143-9280



HEADQUARTERS, DEPARTMENT OF THE ARMY

AUGUST 1970

Technical Manual

No. 5-4310-339-25P



HEADQUARTERS
DEPARTMENT OF THE ARMY
WASHINGTON, D.C., 27 August 1970

ORGANIZATIONAL, DIRECT AND GENERAL SUPPORT, AND DEPOT

MAINTENANCE REPAIR PARTS AND SPECIAL TOOLS LIST

COMPRESSOR, RECIPROCATING, AIR, 15 CFM, 175 PSI, ELECTRIC MOTOR

DRIVEN (INGERSOLL-RAND MODEL 242D7-1/2) FSN 4310-143-9280

Current as of 14 August 1970



	Paragraph	Page
SECTION I. INTRODUCTION		
Scope	1	3
General	2	3
Explanation of columns	3	3
Special information	4	5
How to locate repair parts	5	5
Federal supply codes for manufacturers	6	6
Recommendations for maintenance publication improvements	7	6
II. PRESCRIBED LOAD ALLOWANCE		
III. REPAIR PARTS FOR ORGANIZATIONAL MAINTENANCE		

		Listing Page	Illus. Fig.
Group	01. Inflator Device.....	2	
	Inflator device.....		1
	02. Belt Guard Assembly.....	2	
	Belt guard assembly.....		-2
	03. Controls and Instruments.....	2	
	Controls and instruments.....		3
	04. Motor Assembly.....	2	
	Motor assembly.....		4
	05. Compressor Assembly.....	3	
	Compressor pulley.....		6
	0 Air filter discharge line.....		
and vent tubes.....		8	
05. Pilot valve, connection rods, crankshaft and frame.....		10	
06. Receiver and Fittings.....	4		
Receiver and fittings.....		11	
Section	IV. SPECIAL TOOLS, TEST AND SUPPORT EQUIPMENT FOR ORGANIZATIONAL MAINTENANCE - NOT APPLICABLE		
	V. REPAIR PARTS FOR DIRECT SUPPORT, GENERAL SUPPORT, AND DEPOT MAINTENANCE		
Group	01. Inflator Device.....	6	
	Inflator device.....		1
	02. Belt Guard Assembly.....	6	
	Belt guard assembly.....		2
	03. Controls and Instruments.....	7	
	Controls and instruments.....		3
	04. Motor Assembly.....	8	
	Motor assembly.....		4
	Motor assembly.....		5
	05. Compressor Assembly.....	10	
	Compressor Pulley.....		6
Innercooler and aftercooler.....		7	
Air filter, discharge line, and vent tube.....		8	
primary cylinder and secondary cylinder.....		9	
Pilot valve, connecting rods, crankshaft, and frame.....		10	
06. Receiver and Fittings.....	15		
Receiver and fittings.....		11	
07. Repair Parts Kits and Sets.....	16		
Section	VI. SPECIAL TOOLS, TEXT, AND SUPPORT EQUIPMENT FOR DIRECT SUPPORT, GENERAL SUPPORT AND DEPOT MAINTENANCE - NOT APPLICABLE		
	VII. FEDERAL STOCK NUMBER AND REFERENCE NUMBER INDEX.....		29

SECTION I
INTRODUCTION

1. Scope.

This manual lists repair parts, special tools, test and support equipment required for the performance of organizational, direct support, general support, and depot maintenance of the compressor.

2. General.

This Repair Parts and Special Tools List is divided into the following sections:

a. Prescribed Load Allowance (PLA) - Section II.

A. composite listing of repair parts, special tools, test and support equipment having quantitative allowances for initial stockage at the organizational level.

b. Repair Parts - Section III. A list, in figure and item number sequence, of repair parts authorized at the organizational level for the performance of maintenance, including those items which must be removed for replacement of the authorized item. Items are listed by assembly group in top down breakdown sequence.

c. Special Tools, Test and Support Equipment - Section IV. Not Applicable.

d. Repair Parts - Section V. A list, in figure and number sequence, of the repair parts authorized for the performance of maintenance at the direct support, general support, and depot levels, including those items which must be removed for replacement of the authorized item. Items, except kits and sets, are listed by assembly group in top down breakdown sequence. Repair parts kits and sets are listed separately as Group 07 at the end of the Repair Parts List without regard to the assembly group to which they belong. Components of the kits and sets are listed in their proper sequence in the assembly group to which they belong and are referenced to the FSN of the kit or set.

e. Special Tools, Test and Support Equipment - Section VI. Not Applicable.

f. Federal Stock Number and Reference Number Index - Section VII. A list of Federal Stock Numbers in ascending numerical sequence, followed by a list of reference numbers appearing in all listings, in ascending alpha-numeric sequence, cross-referenced to the illustration figure and item number.

Note Items not illustrated are cross-referenced to page number.

3. Explanation of Columns.

The following provides an explanation of columns in the tabular lists in Sections II through IV.

a. Source, Maintenance, and Recoverability Codes (SMR).

(1) *Source code.* Indicates the selection status and source for the listed item. Source codes used are:

Code	<i>Explanation</i>
P	Repair parts which are stocked in or supplied from the GSA/DSA, or Army supply system and authorized for use at indicated maintenance categories.
P2	Repair parts which are procured and stocked for insurance purposes because the combat or military essentiality of the end item dictates that a minimum quantity be available in the supply system.
M	Repair parts which are not procured or stocked, but are to be manufactured at indicated maintenance levels.
A	Assemblies which are not procured or stocked as such, but are made up of two or more units. Such component units carry individual stock numbers and descriptions, are procured and stocked separately and can be assembled to form the required assembly at indicated maintenance categories.
X	Parts and assemblies which are not procured or stocked and the mortality of which normally is below that of the applicable end item or component. The failure of such part or assembly should result in retirement of the end item from the supply system.
X1	Repair parts which are not procured or stocked. The requirement of such items will be filled by use of the next higher assembly or component.
X2	Repair parts which are not stocked. The indicated maintenance category requiring such repair parts will attempt to obtain them through cannibalization. Where such repair parts are not obtainable through cannibalization, requirements will be requisitioned, with accompanying justification, through normal supply channels.
G	Major assemblies that are procured with PEMA funds for initial issue only as exchange assemblies at DSU and GSU level. These assemblies will not be stocked above GS and DS level or returned to depot supply level.

(2) *Maintenance code.* Indicates the lowest category of maintenance authorized to install the listed item. The maintenance codes are:

<i>Code</i>	<i>Explanation</i>
O	Organizational maintenance
F	Direct support maintenance
H	General support maintenance
D	Depot maintenance

(3) Recoverability code. Indicates whether unserviceable items should be returned for recovery or salvage. Items not coded are expendable. Recoverability codes are:

<i>Code</i>	<i>Explanation</i>
R	Applied to repair parts (assemblies and components) which are considered economically repairable at direct and general support maintenance leveles. When the maintenance capability to repair these items does not exist, they are normally disposed of at the GS level. When supply c onsiderations dictate, some of these repair parts may be listed for automatic return to supply for depot level repair as set forth in AR 710-50. When so listed, they will be replaced by supply on an exchange basis.
S	Repair parts and assemblies which are economically repairable at DSU and GSU activities and which normally are furnished by supply on an exchange basis. When items are determined by a GSU to be uneconomically repairable they will be evacuated to a depot for evaluation and analysis before final dispos ition.
T	High dollar value recoverable repair parts which are subject to special handling and are issued on an exchange basis. Such repair parts are normally repaired or overhauled at depot maintenance activities.
U	Repair parts specifically selected for salvage by reclamation units because of precious metal content, critical materials, or high dollar value reusable casings or castings.

b. *Federal Stock Number.* Indicates the Federal stock number assigned to the item and will be used for requisitioning purposes.

c. *Description.* Indicates the Federal item name and any additional description of the item required. Assembly components and subassemblies are indented under major assemblies. The abbreviation "w/e" when used as a part of the nomenclature, indicates the Federal stock number includes all armament, equipment, accessories, and repair parts issued with the item. A part number or other reference number is followed by the applicable 5-digit Federal supply code for manufacturers in parenthesis.

Repair parts quantities included in kits and sets are shown in front of the repair part name. Material required for manufacture or fabrication is identified.

d. *Unit of Measure (U/M).* A two-character alphabetic abbreviation indicating the amount or quantity of the item upon which the allowances are based, e.g., ft, ea, pr, etc.

e. *Quantity Incorporated in Unit.* Indicates the quantity of the item used in the assembly group. A "V" appearing in this column in lieu of a quantity indicates that a definite quantity cannot be indicated (e.g., shims, spacers, etc.).

f. *15-Day Organizational Maintenance Allowance.*

(1) The allowance columns are divided into four subcolumns. Indicated in each subcolumn opposite the first appearance of each item is the total quantity of the items authorized for the number of equipments supported. Subsequent appearances of the same item will have the letters 'REF' in the allowance column. To locate the referenced item, locate the FSN or reference number in the index. The earliest figure and item number is the referenced item. Items authorized for use as required but not for initial stockage are identified with an asterisk in the allowance column.

(2) The quantitative allowance for organizational level of maintenance represents one initial prescribed load for a 15-day period for the number of equipments supported. Units authorized additional prescribed loads, multiply the number of prescribed loads by quantity in the appropriate density column to determine the number of repair parts authorized.

(3) To determine allowances when supporting more than 100 of these equipments. First, divide the number of equipments supported by 100 by moving the decimal two spaces left; second, multiply the result by the quantity in the 51-100 density column. Example, authorized allowance for 51-100 equipments is 12; for 140 equipments, multiply 12 by 1.40 or 16.80 rounded off to 17 parts required.

(4) Subsequent changes to allowances will be limited as follows: No change in the range of items is authorized. If additional items are considered necessary, recommendation should be forwarded to the U.S. Army Mobility Equipment Command for exception or revision to the allowance list. Revisions to the range of items authorized will be made by the U.S. Army Mobility Equipment Command based upon engineering experience, demand data, or TAERS information.

g. *30-Day DS/GS Maintenance Allowances.*

Note. Allowances in GS Column are for GS maintenance only

(1) The allowance columns are divided into three subcolumns. Indicated in each subcolumn, opposite the first appearance of each item, is the total quantity of items authorized for the number of equipments supported. Subsequent appearances of

the same item will have the letters "REF" in the applicable allowance column. To locate the referenced item locate the FSN or reference number in the index. The earliest figure and item number is the referenced item. Items authorized for use as required but not for initial stockage are identified with an asterisk in the allowance column.

(2) The quantitative allowances for DS/GS levels of maintenance will represent initial stockage for a 30-day period for the number of equipments supported.

(3) To determine allowances when supporting more than 100 of these equipments. First, divide the number of equipments supported by 100 by moving the decimal two places left; second, multiply the result by the quantity in the 51-100 density column. Example, authorized allowance for 51-100 equipments is 40; for 150 equipments multiply 40 by 1.50 or 60 parts required.

h. 1-Year Allowance per 100 Equipments/Contingency Planning Purposes.

Indicates opposite the first appearance of each item the total quantity required for distribution and contingency planning purposes. The range of items indicates total quantities of all authorized items required to provide for adequate support of 100 equipments for one year. Subsequent appearances of the same item will have the letters "REF" in the allowance column.

i Depot Maintenance Allowance Per 100 Equipments. Indicates opposite the first appearance of each item the total quantity authorized for depot maintenance of 100 equipments. Subsequent appearances of the same item will have the letters "REF" in the allowance column. Items authorized for use as required but not for initial stockage are identified with an asterisk in the allowance column.

j. illustration. This column is divided as follows:

(1) *Figure number.* Indicates the figure number of the illustration in which the item is shown.

(2) *Item number.* Indicates the callout number used to reference the item in the illustration.

4. Special Information.

a. Repair parts mortality has been based on 1200 hours operation per year.

b. Parts which require manufacture or assembly at a category higher than that authorized for installation will indicate in the source column the higher category.

c. The following publications pertain to the compressor and its components:

TM 5-4310-339-15 ----- Operator, Organizational, Direct Support, General Support and Depot Maintenance Manual.

LO 5-4310-339-12 ----- Lubrication order

d. The same illustrations are used to illustrate the repair parts and special tools listed in both organizational maintenance section and direct and general support and depot maintenance section.

5. How to Locate Repair Parts.

a. When Federal stock number or reference number is unknown:

(1) *First.* Using the table of contents determine the assembly group within which the repair part belongs. This is necessary since illustrations are prepared for assembly groups, and listings are divided into the same groups.

(2) *Second.* Find the illustration covering the assembly group to which the repair part belongs.

(3) *Third.* Identify the repair part on the illustration and note the illustration figure and item number noted on repair part.

(4) *Fourth.* Using the Repair Parts Listings, find the assembly group to which the repair part belongs and locate the illustration figure and item number noted on the illustration.

b. When Federal stock number or reference is known:

(1) *First.* Using the Index of Federal Stock Numbers and Reference Numbers find the pertinent Federal stock number or reference number. This index is in ascending FSN sequence followed by a list of reference numbers in alpha-numeric sequence, cross-referenced to the illustration figure number and item number.

(2) *Second.* Using the Repair Parts Listing, find the assembly group of the repair part and the illustration figure number and item number referenced in the Index of Federal Stock Numbers and Reference Numbers.

c. When the Federal stock number or reference number is known and the repair part is not illustrated

(1) *First.* Using the index of Federal Stock Numbers and Reference Numbers find the pertinent Federal stock number or reference number in the section titled Items not Illustrated and note the page number. This section is in ascending FSN sequence followed by a list of reference numbers in alpha-numeric sequence, cross-referenced to the page number.

(2) *Second.* Using the applicable page number, locate the pertinent stock number or reference number in the Repair Parts Listing. Items which are not illustrated are listed at the end of the assembly group to which they belong.

6. Federal Supply Code for Manufacturer.

<i>Code</i>	<i>Manufacturer</i>	<i>Code</i>	<i>Manufacturer</i>
02295	General Electric Co. General Purpose Control Dept. P. O. Box 913 Bloomington, Illinois 61702	73842	Goodyear Tire and Rubber Co. 1144 E. Market Akron, Ohio 44316
03510	General Electric Co. Small AC Motor and Generator Dept. 1605 Winter Street Fort Wayne, Indiana 46803	79470	The Weatherhead Co. 300 East 131st Street Cleveland, Ohio 44108
12168	Nibco Inc. 50 Simpson St. Elkhardt, Indiana 46514	81348	Federal Specifications Promulgated by General Services Administration
		88663	Ingersoll-Rand Co., Painted Post Plant Painted Post, New York 14870
19804	Square D Co. 4500 Lee Road Cleveland, Ohio 44128		
24161	Gates Rubber Co. 999 South Broadway Denver, Colorado 44108		
73680	Garlock Inc. Palmyra, N.Y. 14522		

7. Recommendations for Maintenance Publication, Improvements

Report of errors, omissions, and recommendations for improving this publication by the user is encouraged. Reports should be submitted on DA Form 2028 (Recommended Changes to Publications) and forwarded direct to Commanding General, U.S. Army Mobility Equipment Command, ATTN: AMSME-MPP 4300 Goodfellow Boulevard, St. Louis, Mo. 63120.

SECTION II. PRESCRIBED LOAD ALLOWANCE

(1) FEDERAL STOCK NUMBER	(2) DESCRIPTION	USABLE ON CODE	15-DAY ORGANIZATIONAL MAINTENANCE ALLOWANCE			
			(a) 1-5	(b) 6-7	(c) 8-9	(d) 10
	GROUP 04 - MOTOR ASSEMBLY					
3030-785-4419	ELT SET, V			2	2	4
	GROUP 05 - COMPRESSOR ASSEMBLY					
4310-012-7878	AD, FILTER			1	2	4

(1) SMR CODE	(2) FEDERAL STOCK NUMBER	(3) DESCRIPTION REF NUMBER & MFR CODE	(4) USABLE ON CODE	(5) QTY INC IN INIT	(6) 15-DAY ORGANIZATIONAL MAINTENANCE ALW				(7) ILLUS- TRATION	
					(a)	(b)	(c)	(d)	(a)	(b)
					1-5	5-20	21-50	1-100	IG. NO.	ITEM NO.
		SECTION III REPAIR PARTS FOR ORGANIZATIONAL MAINTENANCE								
		GROUP 01 - INFLATOR DEVICE								
0	491 0-204-2644	DEVICE, INFLATION GGG9TYPE3CLASSASTYLE3 (81 348)	EA	1	*	*	*	*	1	1
0	4720-253-0872	HOSE SERVICE LINE 3W95993 (88663)	EA	1	*	*	*	*	1	2
0	4730-277-8289	NIPPLE, HEXAGON SERVICE LINE 3325X4 (79470)	EA	1					1	3
2 0		BUSHING, REDUCER, SERVICE LINE: 1-2x 1-4 23A7M5 (88663)	EA	1					1	4
2 0		VALVE, GLOBE, SERVICE LINE: globe, 1-2 in. pipe size 3W75410T2 (12168)	EA	1					1	5
2 0		VALVE, SAFETY X1 396T28-200 (88663)	EA	1					1	6
		GROUP 02 - BELT GUARD ASSEMBLY								
0		SCREW,CAP, HEXAGON HEAD: belt guard mtg, 3/8-16x 6 1/2 in. lg 17A2C1 34 (88663)	EA	2					2	1
0		WASHER, LOCK: 3/8 in. screw size 14A5C76 (88663)	EA	2					2	2
2 0		SPACER, MOUNTING: 3/8 in. id, 4 15/16 in. lg 3W75479T20 (88663)	EA	2					2	3
2 0		SPACER, MOUNTING: 3/8 in. id, 1 3/4 in. lg 3W75479T7 (88663)	EA	2					2	4
0	5305-069-5577	SCREW, CAP, HEXAGON HEAD: belt guard mtg, 3/8-16 thd size, 2 1/2 in. lg 35A2-1C119 88663)	EA	1					2	5
0		WASHER, LOCK: 3/8 in. screw size 14A5C76 (88663)	EA	1					2	6
2 0		SPACER, MOUNTING: 3/8 in. id, 1 3/4 in. lg 3W75479T7 (88663)	EA	1					2	7
0	5305-269-3206	SCREW, CAP, HEXAGON HEAD: belt guard mtg 35A2-1 C107 (88663)	EA	2					2	8
0		WASHER, LOCK: 3/8 in. screw size 14A5C76 (88663)	EA	2					2	9
2 0		BRACE, BELT GUARD MOUNTING: 1 in. wx 10 1/2 in. lg, 1/8 in. thk, cold roll steel 3W75424T9 (88663)	EA	1					2	10
0		SCREW, TAPPING, ROUND HEAD: belt guard mtg, 14 thd size, 1/2 in. lg, Type B, round head 3W96281 (88663)	EA	2					2	11
2 0		GUARD, BELT 3W96385 (88663)	EA	1					2	12
2 0		BACK BELT GUARD 3H12720P2 (88663)	EA	1					2	13
		GROUP 03- CONTROLS AND INSTRUMENTS								
0	6685-527-7187	GAGE, PRESSURE 3A12N37 (88663)	EA	1	*	*	*	*	3	1
		GROUP 04 - MOTOR ASSEMBLY								
0		NUT TIGHTENER: 1/2-1 3 screw size 16A4C5 (88663)	EA	1					4	1
2 0		CLIP, TIGHTENER 3W11261 (88663)	EA	1					4	2

(1) SMR CODE	(2) FEDERAL STOCK NUMBER	(3) DESCRIPTION REF NUMBER & MFR CODE	(4) USABLE ON CODE	(5) QTY IN UNIT	(6) 15-DAY ORGANIZATIONAL MAINTENANCE ALW				(7) ILLUS- TRATION	
					(a)	(b)	(c)	(d)	(a)	(b)
					1-5	6-10	11-50	51-100	FIG NO	ITEM NO.
2 0		TIGHTENER, BELT K1429T312X6 (88663)	EA	1					4	3
0	5310-298-9271	NUT, TIGHTENER 16A4C3 (88663)	EA	1					4	4
0		WASHER, LOCK, TIGHTENER 14A5C76 (88663)	EA	1					4	5
0	5310-298-9271	NUT, TIGHTENER 16A4C3 (88663)	EA	3					4	6
0		WASHER, LOCK, TIGHTENER 14A5C76 (88663)	EA	3					4	7
0	5305-865-5835	SCREW, CAP, HEXAGON HEAD: motor mtg 35A2-1C115 (88663)	EA	3					4	8
0	3030-785-4419	BELT SET, V: compressor drive 478SET2 (73842)	EA	1	*		2	4	4	9
0		SCREW, ROUND HEAD: conduit stator frame N44P21006B11 (03510)	EA	4					5	2
2 0		BOX, CONDUIT 114C460AAP1 (03510)	EA	1					5	5
2 0		PULLEY, MOTOR: 2A groove, Type D, 9.0 P. D.-9.25 OD hubs DS, 1 3/8 in. bore, 5/16 in. x 5/32 in. keyway 3W96261 (88663)	EA	1					5	6
2 0		KEY, SHAFT: 5/16 in. x 5/16 in. x 1 1/2 in. lg 734A550AWP35 (03510)	EA	1					5	7
GROUP 05 - COMPRESSOR ASSEMBLY										
0	5305-042-6417	SCREW, CAP, HEXAGON HEAD: compressor mtg, 1/2-13 x 1 1/2 in. lg 4S90725-113 (96906)	EA	4					6	6
0	5310-584-5272	WASHER, LOCK: 1/2 in. screw size MS35338-48 (96906)	EA	4					6	7
2 0		FILTER ASSEMBLY 3W103103 (88663)	EA	1					8	1
0		NUT, WING, FILTER: 1 /4-20 81 A4C9 (88663)	EA	1					8	2
1		HEAD, TOP, FILTER 3W34037 (88663)	EA	1					8	3
2 0		SCREEN, OUTER, FILTER 3W21779 (88663)	EA	1					8	4
0	4310-012-7878	PAD, FILTER 3W21479 (88663)	EA	4	*		2	4	8	5
2 0		SCREEN, INNER, FILTER 3W21477 (88663)	EA	1					8	6
1		HEAD, BOTTOM 3W34042 (88663)	EA	1					8	7
0		COUPLING, REDUCER 79A7M14 (88663)	EA	1					8	8
0		NIPPLE: pipe, 3/4 in. x 2 in. lg 18A7M5 (88663)	EA	1					8	9
0		ELBOW, STREET: 90 deg pipe, 1 in. 67A7M6 (88663)	EA	1					8	10
2 0		TUBE DISCHARGE LINE 3W96150 (88663)	EA	1					8	11
0	4730-277-9166	ELBOW, TUBE, DISCHARGE 402X12 (79470)	EA	1					8	12

(1) SMR CODI	(2) FEDERAL STOCK NUMBER	(3) DESCRIPTION REF NUMBER & MFR CODE	(4) UNABLE ON CODE	(5) QTY INC IN UNIT	(6) 15-DAY ORGANIZATIONAL MAINTENANCE ALW				(7) ILLUS- TRATION		
					(a)	(b)	(c)	(d)	(a)	(b)	
					1-5	6-20	21-50	51-100	FIG. NO.	ITEM NO.	
0	730-193-0879	BUSHING, REDUCER, DISCHARGE LINE 23A7M7 (88663)		EA	1					8	13
2 0		TUBE, PILOT VALVE 3W75259T2 (88663)		EA	1					8	14
0	730-277-8768	CONNECTOR, TUBE 200X5 (79470)		EA	1					8	15
2 0		TUBE, BREATHER 3W75259T1 (88663)		EA	1					8	16
0	730-277-8768	CONNECTOR, TUBE 200X5 (79470)		EA	1					8	17
0	730-277-8768	CONNECTOR, TUBE 200X5 (79470)		EA	1					8	18
0	730-428-2941	PLUG, OIL FILLER 3WB2 (88663)		EA	1	*	*	*	*	10	6
0	1330-250-0226	PACKING, PREFORMED 20A11CM212 (88663)		EA	1	*	*	*	*	10	7
0		PLUG, PIPE, HEXAGON HEAD: 1/2-14 thd size 35A7B5 (88663)		EA	1					10	33
2 0		EXTENSION, DRAIN 3W75329 (88663)		EA	1					10	34
		GROUP 06 -06. RECEIVER AND FITTINGS									
0		NIPPLE, SERVICE LINE: 1/2 in. pipe, 1 1/8 in. lg 18A7W4 (88663)		EA	1					11	1
0		BUSHING, REDUCER, SERVICE LINE: 1/2 in. x 1/4 in. 23A7B5 (88663)		EA	1					11	2
0		TEE, PIPE: 1 x 1/2 x 1/2 in. (Female) 74A7M33 (88663)		EA	1					11	3
0		NIPPLE, SERVICE LINE: 1 in. pipe, 1 1/2 in. lg 18A7W6 (88663)		EA	1					11	4
0		BUSHING, REDUCER: 1 in. to 3/4 in. 23A7M5 (88663)		EA	1					11	5
0	730-289-3261	CONNECTOR, MALE, AFTERCOOLER 238X8 (79470)		EA	1					11	6
2 0		ELBOW, STREET, AFTERCOOLER 100A7M3 (88663)		EA	1					11	7
0		NIPPLE, AFTERCOOLER: 1/2 in. pipe, 3 in. lg 19A7W52 (88663)		EA	2					11	8
2 0		ELBOW, STREET, AFTERCOOLER 102A7M3 (88663)		EA	1					11	9
0		NIPPLE: 1 in. pipe, 1 1/2 in. lg 18A7W6 (88663)		EA	1					11	10
0		BUSHING, REDUCER: 1 in. to 3/4 in. 23A7M5 (88663)		EA	1					11	16
0	730-288-9953	CONNECTOR, TUBE, CONTROL DEVICE 134X5 (88663)		EA	1					1	17
X2 0		TUBE, CONTROL DEVICE 1W75211T6 (88663)		EA	1					1	18
0		ELBOW, CONTROL DEVICE TUBE 115061E5 (88663)		EA	1					1	19
0		ELBOW, STREET, DRAIN LINE: 1/4 in. pipe size, 90 deg 17A7M2 (88663)		EA	1					1	20
X2 0		WOCK, DRAIN 145 (79470)		EA	1					1	21

(1) SMR CODE	(2) FEDERAL STOCK NUMBER	(3) DESCRIPTION REF NUMBER & MFR CODE	(4) USABLE ON CODE	(5) QTY INC IN INIT	(6) 15-DAY ORGANIZATIONAL MAINTENANCE ALW			(7) ILLUS- TRATION	
					(b)	(c)	(d)	(a)	(b)
					6-20	1-50	1-100	FIG. NO.	ITEM NO.
0		PLUG, PIPE: 3/4 in. pipe size 1A7M6 (88663)	EA	1				11	22
0		PLUG, PIPE: 1 in. pipe size 1A7M7 (88663)	EA	1				11	23
2 0		RECEIVER R49182 (88663)	EA	1				11	24

(1) SMR CODE	(2) FEDERAL STOCK NUMBER	(3) DESCRIPTION REF NUMBER & MFR CODE	(4) USABLE ON CODE UNIT OF MEAS	(5) QTY INC IN UNIT	(6) 30-DAYDS MAINT ALLOWANCE			(7) 30-DAY G5 MAINT ALLOWANCE			(8) 1-YR ALW PER 100 EQUIP CNTGY	(9) DEPOT MAINT ALW PER 100 EQUIP	(10) ILLUS- TRATION	
					(a)	(b)	(c)	(a)	(b)	(c)			(a)	(b)
					1-20	21-50	51-100	1-20	21-50	51-100			FIG. NO.	ITEM NO.
		SECTION V REPAIR PARTS FOR DIRECT SUPPORT, GENERAL SUPPORT AND DEPOT MAINTENANCE GROUP 01 - INFLATOR DEVICE												
? 0	4910-204-2644	DEVICE, INFLATION GGG9TYPE3CLASSASTYLE3 (81348)	EA	1	*	*	*	*	*	*	*	*	1	1
? 0	4720-253-0872	HOSE SERVICE LINE 3W95993 (88663)	EA	1	*	*	*	*	*	*	10	10	1	2
0	4730-277-8289	NIPPLE, HEXAGON SERVICE LINE 3325X4 (79470)	EA	1									1	3
12 0		BUSHING, REDUCER, SERVICE LINE: 1-2 x 1-4 23A7M5 (88663)	EA	1									1	4
12 0		VALVE, GLOBE, SERVICE LINE: globe, 1-2 in. pipe size 3W75410T2 (12168)	EA	1									1	5
12 0		VALVE, SAFETY X1396T28-200 (88663)	EA	1									1	6
12 F		RIVET, BUTT HEAD 39A13N406 (88663)	EA	8									1	7
12 F		PLATE, INSTRUCT, OPERATING 3W96007 (88663)	EA	1									1	8
12 F		PLATE, IDENTIFICATION 3W96006 (88663)	EA	1										
		GROUP 02- BELT GUARD ASSEMBLY												
0		SCREW, CAP, HEXAGON HEAD: belt guard mtg, 3/8-16 x 6 1/2 in. lg 17A2C134 (88663)	EA	2									2	1
0		WASHER, LOCK: 3/8 in. screw size 14A5C76 (88663)	EA	2									2	2
12 0		SPACER, MOUNTING: 3/8 in. id, 4 15/16 in. lg 3W75479T20 (88663)	EA	2									2	3
12 0		SPACER, MOUNTING: 3/8 in. id, 1 3/4 in. lg 3W75479T7 (88663)	EA	2									2	4
0	5305-069-5577	SCREW, CAP, HEXAGON HEAD: belt guard mtg, 3/8-16 thd size, 2 1/2 in. lg 35A2-1 C1 19 (88663)	EA	1									2	5
0		WASHER, LOCK: 3/8 in. screw size 14A5C76 (88663)	EA	1									2	6
12 0		SPACER, MOUNTING: 3/8 in. id, 1 3/4 in. lg 3W75479T7 (88663)	EA	1									2	7
0	5305-269-3206	SCREW, CAP, HEXAGON HEAD: belt guard mtg 35A2-1C107 (88663)	EA	2									2	8
0		WASHER, LOCK: 3/8 in. screw size 14A5C76 (88663)	EA	2									2	9
12 0		BRACE, BELT GUARD MOUNTING: 1 in. w x 10 1/2 in. lg, 1/8 in. thk, cold roll steel 3W75424T9 (88663)	EA	1									2	10
0		SCREW, TAPPING, ROUND HEAD: belt guard mtg, 1/4 thd size, 1/2 in. Type B, round head 3W96281 (88663)	EA	2									2	11
12 0		GUARD, BELT 3W96385 (88663)	EA	1									2	12

(1) SMF COD	(2) FEDERAL STOCK NUMBER	(3) DESCRIPTION REF NUMBER & MFR CODE	(4) USABLE ON CODE UNI OF MEA	(5) QT INI IN UNI	(6) 30-DAY DS MAINT ALLOWANCE			(7) 30-DAY GS MAINT LO CE			(8) 1-YR ALW PER 100 EQUIV CNTG	(9) DEPC MAIN ALW PER 100 QUIP	(10) IL TI IOF	
					(a)	(b)	(c)	(a)	(b)	(c)			(a)	(b)
					1-2	11-5	1-10	1-2	21-	51-10			FIG NO.	ITE NO
2 0		ACK BELT GUARD E12720P2 (88663)	EA	1								2	13	
		GROUP 03- CONTROLS AND INSTRUMENTS												
0	6685-527-7187	AGE, PRESSURE A12M37 (88663)	EA	1	*	*	2	*	*	2	10	10	3	1
F	5930-802-2285	WITCH, PRESSURE J13GHG2 (19804)	EA	1	*	*	2	*	*	2	10	10	3	2
1		NUT, COVER 3503W32001 (19804)	EA	1									3	3
1		COVER, PRESSURE SWITCH BOX 2554B9X2 (19804)	EA	1									3	4
1		BLOCK ASSEMBLY, CONTACT 2554C7G2 (19804)	EA	1									3	5
F		KIT, CONTACT 9998PC2 (19804)	EA	1	*	*	2	*	*	2	10	10		
		4 EA, CONTACT, STATIONARY 2554G12 (19804)											3	6
		3 EA, CONTACT, MOVABLE 2554G13 (19804)											3	7
		2 EA, SPRING, CONTACT 1537L4 (19804)											3	8
		DIAPHRAGM ASSEMBLY 2554D28G1 (19804)	EA	1									3	9
		FLANGE ASSEMBLY 1317D8G10 (19804)	EA	1									3	0
		LEVER, VALVE 2821D5G2 (19804)	EA	1									3	1
		YOKE ASSEMBLY 2554D5G1 (19804)	EA	1										
F	11 0-222-8257	CONTROL, STARTER CR106C103 (24446)	EA	1	*	*	*	*	*	*	6	6	3	2
	950-678-3733	COIL, OPERATING 15D21G3 (02295)	EA	1	*	*	2	*	*	2	0	0	3	3
	110-790-5530	KIT, CONTACT 546A301 G2 (02295)	EA	1	*	*	2	*	*	2	0	0	3	4
		SUPPORT, STATIONARY CONTACT 546A301 G17 (02295)	EA										3	5
		COVER, ARC CHUTE 546A301G19 (02295)	EA										3	6
	945-444-9377	HEATER OVERLOAD: 220V CR123C27-3B (02295)	EA		*	2	2	*	2	2	0	0	3	7
	945-383-2557	HEATER OVERLOAD: 440V CR123C13-7B (02295)	EA		*	2	2	*	2	2	0	0	3	8
		ARMATURE, MOVABLE CONTACT 546A301G18 (02295)	EA											
12		WITCH, TOGGLE TC2228 (03510)	EA											
		WUIT ASSEMBLY: toggle switch to pres- sure switch (9392 (88663)	EA											
		LOCKNUT, CONDUIT ELBOW 3W103501 S1 (88663)	EA											

(1) SM COD	(2) FEDERAL STOCK NUMBER	(3) DESCRIPTION REF NUMBER & MFR CODE	(4) USABLE ON CODE UNIT OF MEA	(5) QT' INC IN JUN'	(6) 30-DAY DS MAINT ALLOWANCE			(7) 3C Y G LOV CE			(8) 1-YR ALW PER 100 QUIF NTG	(9) DEPI MAIN ALW PER 100 :QUIF	(10) IL TF ION	
					(a)	(b)	(c)	(a)	(b)	(c)			(a)	(b)
					1-21	21-5	51-10	1-21	21-5	51-10			FIG NO.	TE NO
K2 F		ELBOW, 90 DEGREE, CABLE CONDUIT : toggle switch to pressure switch 3W103507-1 (88663)	EA	2										
K2 F		CONDUIT: toggle switch to pressure switch 3W103506F17 (88663)	EA											
K2 F		WIRE, INSULATED: from toggle switch to starter 3W103499B14-6 (88663)	EA	2										
K2 F		TERMINAL, FORKED 144A24B3 (88663)	EA	4										
K2 F		WIRE, INSULATED: toggle switch to pressure switch 3W103499B1427 (88663)	EA	2										
K2 F		TERMINAL, FORKED 144A24B3 (88663)	EA	4										
K2 F		CONDUIT ASSEMBLY, MOTOR R49391 (88663)	EA											
K2 F		LOCKNUT 3W103501S3 (88663)	EA	2										
K2 F		ELBOW, SEALTITE: motor to starter conduit 228A24U75 (88663)	EA	2										
K2 F		CONDUIT, SEALTITE: motor to starter 225A24U75 (88663)	EA	1										
K2 F		WIRE, INSULATED: No. 10 AWG 3W103502B10-29 (88663)	EA	3										
K2 F		TERMINAL, FORKED 3W103504E2 (88663)	EA	6										
		GROUP 04 - MOTOR ASSEMBLY												
O		UT, TIGHTENER: 1/2-13 screw size 6A4C5 (88663)	EA	1									4	1
K2 O		LIP, TIGHTENER W11261 (88663)	EA	1									4	2
K2 O		TIGHTENER, BELT 1429T312X6 (88663)	EA	1									4	3
O	310-298-9271	UT, TIGHTENER 6A4C3 (88663)	EA	1									4	4
O		ASHER, LOCK, TIGHTENER 4A5C76 (88663)	EA	1									4	5
O	310-298-9271	UT, TIGHTENER 6A4C3 (88663)	EA	3									4	6
O		ASHER, LOCK, TIGHTENER 4A5C76 (88663)	EA	3									4	7
O		CREW, CAP, HEXAGON HEAD: motor mtg 5A2-1C115 (88663)	EA	3									4	8
O	3030-785-4419	ELT SET, V: compressor drive 78SET2 (73842)	EA	1	2	4	8	2	4	8	00	00	4	9
F	3105-236-6300	MOTOR: 7 1/2-3 PH-60 HZ K213AK202 (03510)	EA	1	*	*	2	*	*	2	6	6	4	0
K2 F		BOX ASSEMBLY, CONDUIT 511 L122AAG1 (03510)	EA	1									5	1
O		SCREW, ROUND HEAD: conduit stator frame N44P21006B11 (03510)	EA	4									5	2

(1) SMR CODE	(2) FEDERAL STOCK NUMBER	(3) DESCRIPTION REF NUMBER & MFR CODE	(4) USABLE ON CODE JNIT OF WEA\$	(5) QTY INC IN UNIT	(6)			(7)			(8) 1-YR ALW PER 100 QUIP NTGY	(9) DEPO MAINT ALW PER 100 QUIP	(10) ILLUS- TRATION	
					30-	Y DS	INT	30- DAY GS	INT				FIG. NO.	TEh NO.
					(a)	(b)	(c)	(a)	(b)	(c)				
					1-20	21-51	51-100	1-20	21-50	51-100				
X1		COVER, CONDUIT BOX 114C461AAP1 (03510)	EA	1									5	3
F		SCREW, ROUND HEAD: cover to conduit box N1 12P16006B11 (03510)	EA	2									5	4
X2 0		BOX, CONDUIT 114C460AAP1 (03510)	EA	1									5	5
X2 0		PULLEY, MOTOR: 2A groove, Type D, 1.0 P. D.-9.25 OD hubs DS, 1 3/8 in. bore, 5/16 in. x 5/32 in. keyway	EA	1									5	6
X2 0		KEY, SHAFT: 5/16 in. x 5/16 in. x 1 1/2 in. lg 734A550AMP35 (03510)	EA	1									5	7
F		SCREW, CAP, HEXAGON HEAD 734A586AAP52 (03510)	EA	4									5	8
X1		SHIELD 102D1004AAP1 (03510)	EA	1									5	9
X1		CAP, DUST 734A581ACP1 (03510)	EA	1									5	10
F	4730-816-5744	PLUG, PIPE 734A589AAP1 (03510)	EA	2									5	11
X1		BAFFLE 149A5600AAP1 (03510)	EA	2									5	12
X1		WASHER, SHIM 732A301ALP3 (03510)	V										5	13
X1		WASHER, SPRING 732A303AMP (03510)	EA	2									5	14
X1		WASHER, SPACING 732A302AMP1 (03510)	EA	1									5	15
X1		BEARING, PULLEY END 732A503AEP1 (03510)	EA	1									5	16
X1		SHIELD, PULLEY END 102D1003AAP1 (03510)	EA	1									5	17
F	4730-816-5744	PLUG, PIPE 734A589AAP1 (03510)	EA	2									5	18
X1		BAFFLE 149A5600ABP1 (03510)	EA	1									5	19
P F	3110-965-6664	BEARING 732A502AMP2 (03510)	EA	1	*	*	2	*	*	2	10	10	5	20
X1		FAN 145B185AAP1 (03510)	EA	1									5	21
X1		ROTOR ASSEMBLY 145B200ABG1 (03510)	EA	1									5	22
X1		CORE, ROTOR 145B2300ABG1 (03510)	EA	1									5	23
X1		SHAFT, ROTOR 145B2403AAP1 (03510)	EA	1									5	24
X1		STATOR ASSEMBLY 145B1200ABG1 (03510)	EA	1									5	25
X1		COIL SET, STATOR 186A2001DA (03510)	EA	1									5	26
X1		FRAME STATOR 113D252AAP1 (03510)	EA	1									5	27

(1) SMR CODE	(2) FEDERAL STOCK NUMBER	(3) DESCRIPTION REF NUMBER & MFR CODE	(4) USABLE ON CODE UNIT OF MEAS	(5) QTY INC IN INIT	(6) 30-DAY DS MAINT ALLOWANCE			(7) 30-DAY GS MAINT ALLOWANCE			(8) 1-YR ALW PER 100 QUIP (NTG)	(9) DEPO MAINT ALW PER 100 QUIP	(10) ILLUS- TRATION	
					(a)	(b)	(c)	(a)	(b)	(c)			(a)	(b)
					-20	1-5	1-100	1-20	1-50	1-100			FIG. NO.	ITEM NO.
		GROUP 05 - COMPRESSOR ASSEMBLY												
F	5310-266-0387	NUT, PLAIN, HEXAGON: 1/2-13 thd size 16A4C5 (88663)	EA	1									6	1
F		WASHER, LOCK: 1/2 in. screw size 14A5C101 (88663)	EA	1									6	2
F	5305-071-1776	SCREW, CAP, HEXAGON HEAD: flywheel mtg, 1/2-13 thd size, 4 in. lg 35A2-1C231 (88663)	EA	1									6	3
2 F		WHEEL, V BELT 3R8174 (88663)	EA	1									6	4
F	5315-043-1789	KEY, FLYWHEEL MOUNTING 4S35756-3 (96906)	EA	1									6	5
O	5305-042-6417	SCREW, CAP, HEXAGON HEAD: compressor mtg, 1/2-13 x 1 1/2 in. lg 4S90725-113 (96906)	EA	4									6	6
O	5310-584-5272	WASHER, LOCK: 1/2 in. screw size 4S35338-48 (96906)	EA	4									6	7
F		TUBE, INNERCOOLER ASSEMBLY MANUFACTURE FROM: NUT, TUBE, 2 EA 105X8 (79470) FSN 4730-288-9386 TUBE: 1/2 in. od, 60 in. lg, 5 FT 1-20DX035W60LCO (88663) FSN 4710-278-5523	EA	1									7	1
F		NUT, TUBE CLAMP 14A4C11 (88663)	EA	2									7	2
F	5305-582-6378	SCREW, MACHINE: tube clamp, No. 5 screw size, 3/4 in. lg 3A2C30 (88663)	EA	2									7	3
2 F		CLAMP, TUBE, INNERCOOLER MOUNTING: 1 in. tube size 3W96279 (88663)	EA	4									7	4
F	4730-013-7409	CONNECTOR, TUBE 200X8 (79470)	EA	1									7	5
F	4730-289-3261	CONNECTOR, TUBE 238X8 (79470)	EA	1									7	6
F		ELBOW, REDUCER, INNERCOOLER: 1 1/2 pipe, 90 deg 59A7W10 (88663)	EA	1									7	7
F	4730-050-1155	NIPPLE, INTERCOOLER 19A7W24 (88663)	EA	1									7	8
F	4310-606-3678	VALVE, SAFETY K1396T28-60 (88663)	EA	1	*	*	2	*	*	2	10	10	7	9
F		PLUG, PIPE: 3/8 NPT 30A7W4 (88663)	EA	2									7	10
2 F		CONNECTOR, INTERCOOLER 3W11559P1 (88663)	EA	1									7	11
F	4730-050-1155	NIPPLE, INTERCOOLER 19A7W24 (88663)	EA	1									7	12
2 F		AFTERCOOLER ASSEMBLY 3W96149 (88663)	EA	1									7	13
1		TUBE: 1/2 in. od, 60 in. lg X1434T51 (88663)	EA	1										

(1) SMF CODI	(2) FEDERAL STOCK NUMBER	DESCRIPTION REF NUMBER & MFR CODE	(4) USABLE ON CODE	(5) UNIT OF MEAS	QT IN JUN	(6) 30-DAY DS MAINT ALLOWANCE			(7) 30 Y G LOW MINT CE			(8) 1-YR ALW PER 100 QUIF NTG	(9) EPC MAIN ALW PER 100 QUIP	IL TF	ION NO.
						(a)	(b)	(c)	(a)	(b)	(c)				
						1-2C	21-5	51-10	1-2C	21-5	51-1				
1		NUT, TUBE I15061M8 (88663)	EA		2										
F		AFTERCOOLER CLAMP, NUT 4A4C11 (88663)	EA		1									7	14
F		SCREW, MACHINE, AFTERCOOLER CLAMP: No. 5 screw size, 3/4 in. lg 13A2C30 (88663)	EA		1									7	15
2 F		CLAMP, TUBE, AFTERCOOLER: 1 in. tube size W96279 (88663)	EA		2									7	16
F	.730-289-3261	CONNECTOR, MALE AFTERCOOLER 138X8 (79470)	EA		1									7	17
F	.730-202-9554	CONNECTOR, FEMALE AFTERCOOLER 152X10 (79470)	EA		1									7	18
2 O		FILTER ASSEMBLY W103103 (88663)	EA		1									8	1
O		NUT, WING, FILTER: 1/4-20 81A4C9 (88663)	EA		1									8	2
1		HEAD, TOP, FILTER 3W34037 (88663)	EA		1									8	3
2 O		SCREEN, OUTER, FILTER 3W21779 (88663)	EA		1									8	4
O	.310-012-7878	PAD, FILTER 3W21479 (88663)	EA		4	2	4	8	2	4	8	100	00	8	5
2 O		SCREEN, INNER, FILTER 3W21477 (88663)	EA		1									8	6
1		HEAD, BOTTOM 3W34042 (88663)	EA		1									8	7
O		COUPLING, REDUCER 9A7M14 (88663)	EA		1									8	8
O		PIPE: 3/4 in. x 2 in. lg, pipe 8A7M5 (88663)	EA		1									8	9
O		ELBOW, STREET: 90 deg pipe, 1 in. 7A7M6 (88663)	EA		1									8	10
2 O		TUBE DISCHARGE LINE W96150 (88663)	EA		1									8	11
O	.730-277-9166	ELBOW, TUBE, DISCHARGE 102X12 (79470)	EA		1									8	12
O	.730-193-0879	FLUSHING, REDUCER, DISCHARGE LINE 13A7M7 (88663)	EA		1									8	13
2 O		TUBE, PILOT VALVE W75259T2 (88663)	EA		1									8	14
O	.730-277-8768	CONNECTOR, TUBE 100X5 (79470)	EA		1									8	15
O		TUBE, BREATHER W75259T1 (88663)	EA		1									8	16
O	.730-277-8768	CONNECTOR, TUBE 100X5 (79470)	EA		1									8	17
O	.730-277-8768	CONNECTOR, TUBE 100X5 (79470)	EA		1									8	18
O		COMPRESSOR, BARE 1ST46069 (88663)	EA		1									8	19
F	.305-269-3215	SCREW, CAP, HEXAGON HEAD: air head assembly 35A2-1G116 (88663)	EA		1									9	1

(1) SMR CODE	(2) FEDERAL STOCK NUMBER	(3) DESCRIPTION REF NUMBER & MFR CODE	(4) USABLE ON CODE UNIT OF MEA:	(5) QTY INC IN UNIT	(6) 30-DAY DS MAINT ALLOWANCE			(7) 30-DAY GS MAINT ALLOWANCE			(8) 1-YR ALW PER 100 EQUIP INTG'	(9) DEPC AIN ALW PER 100 QUIF	(10) ILI TR ON	
					(a)	(b)	(c)	(a)	(b)	(c)			(a)	(b)
					-20	21-5	11-10	1-20	21-5	11-100			FIG. NO.	TEM NO.
2 F		HEAD ASSEMBLY, AIR 3W75302T30 (88663)	EA	1								9	2	
F	431 0-423-3574	GASKET 3W6870 (88663) (Part of GASKET SET, (88663) Part Number 3W96280)	EA	2	*	*	2	*	*	2	20	20	9	3
2 F		SPACER ASSEMBLY 3W96259 (88663)	EA	1									9	4
F		NUT 16A4C1P (88663)	EA	4									9	5
F		WASHER, LOCK: 1/4 in. screw size 14A5C55P (88663)	EA	4									9	6
F		SCREW, FILLISTER HEAD, CADMIUM PLATED: screw size, 1/4-20 x 1/2 in. lg 87A2G144P (88663)	EA	4									9	7
F	431 0-423-3576	VALVE 3W6874 (88663)	EA	2									9	8
2 F		SPACER SUBASSEMBLY 3W96260 (88663)	EA	1									9	9
F	5330-413-1 560	GASKET 3W11340 (88663) (Part of GASKET SET, (88663) Part Number 3W96280)	EA	2	*	*	2	*	*	2	10	10	9	10
2 F		SPACER, AIR HEAD 3W96142 (88663)	EA	1									9	11
F	5305-269-2804	SCREW, CAP, HEXAGON HEAD: cylinder mtg 35A2-1G218 (88663)	EA	4									9	12
F	5310-595-6690	WASHER, STEEL X1016T35 (88663)	EA	4									9	13
2 F		CYLINDER ASSEMBLY 3W75296T70 (88663)	EA	1									9	14
1		GASKET 3W75331 (88663) (Part of GASKET SET, (88663) Part Number 3W96280)	EA	1									9	15
F		PISTON AND RING ASSEMBLY 3W75295T40R (88663)	EA	1									9	16
F	431 0-472-9287	RING, COMPRESSOR X1440T38B (88663) (Part of PISTON RING SET, FSN 431 0-472-9287)	EA	2	*	*	2	*	*	2	20	20	9	17
F	431 0-736-0093	RING, OIL X1440T38H (88663) (Part of PISTON RING SET, FSN 431 0-472-9287)	EA	1	*	*	2	*	*	2	10	10	9	18
F	431 0-253-0870	RING, OIL X1440T38M (88663) (Part of PISTON RING SET, FSN 4310-472-9287)	EA	1	*	*	2	*	*	2	10	10	9	19
F	4340-358-1213	RING, LOCK 3W11630 (88663)	EA	2									9	20
F	4310-413-1562	PIN, PISTON 3W1 1629 (88663)	EA	1	*	*	2	*	*	2	10	10	9	21
2 F		PISTON, HIGH PRESSURE 3W75295T40 (88663)	EA	1									9	22
F	4305-071-2069	SCREW, CAP, HEXAGON HEAD: air head mtg 35A2-1 G221 (88663)	EA	4									9	23

(1) SM COD	(2) FEDERAL STOCK NUMBER	DESCRIPTION REF NUMBER & MFR CODE	(4) USABLE ON CODE UNI OF MEA	(5) QT INC IN UNI	(6) 30-DAY DS MAINT ALLOWANCE			(7) 30 Y G LOW UNT CE			(8) 1-YR ALW PER 100 EQUIP CNTG	(9) DEPO MAIN ALW PER 100 EQUIP	(10) IL S- TF ION	
					(a)	(b)	(c)	(a)	(b)	(c)			(a)	(b)
					1-2C	21-5	51-10	1-2C	21-5	51-10			FIG. NO.	ITE NO
E2 I		HEAD ASSEMBLY, AIR 3W75302T40 (88663)	EA	1									9	24
F	431 0-41 3-8528	GASKET 3W6921 (88663) (Part of GASKET SET, (88663) Part Number 3W96280)	EA	2	*	*	2	*	*	2	20	20	9	25
E2 F		SPACER ASSEMBLY 3W75299T40 (88663)	EA	1									9	26
F		NUT 16A4C1P (88663)	EA	4									9	27
F		WASHER, LOCK: cadmium plate, screw size 1/4 in. 14A5C55P (88663)	EA	4									9	28
F		SCREW, FILLISTER HEAD: cadmium plated, screw size 1/4 in., 1/2 in. lg 87A2C144P (88663)	EA	4									9	29
F		WASHER, STEEL X1016T124C (88663)	EA	4									9	30
F	431 0-423-3576	VALVE 3W6874 (88663)	EA	4									9	31
F		SCREW, FILLISTER HEAD: cadmium plated, screw size No. 10, 1/4 in. lg 87A2C114P (88663)	EA	4									9	32
2 F		SPACER SUBASSEMBLY 3W75299T40S (88663)	EA	1									9	33
F	4310-423-3440	GASKET 3W6923 (88663) (Part of GASKET SET, (88663) Part Number 3W96280)	EA	1	*	*	2	*	*	2	10	10	9	34
F	5305-269-2804	SCREW, CAP, HEXAGON HEAD 35A2-1C218 (88663)	EA	4									9	35
F	531 0-595-6690	WASHER, STEEL X1016T35 (88663)	EA	4									9	36
2 F		CYLINDER ASSEMBLY 3W75296T90 (88663)	EA	1									9	37
F	5330-871-8344	GASKET 3W75331 (88663) (Part of GASKET SET, (88663) Part Number 3W96280)	EA	1	*	*	2	*	*	2	20	20	9	38
F		PISTON AND RING ASSEMBLY 3W75295T60R (88663)	EA	1									9	39
F	531 0-918-1 343	RING, COMPRESSOR X1440T59B (30760) (Part of PISTON RING SET, (88663) Part Number X1457T1 5A)	EA	2	*	2	2	*	2	2	20	20	9	40
F	531 0-445-5333	RING, OIL X1 440T59H (30760) (Part of PISTON RING SET, (88663) Part Number X1 457T1 5A)	EA	1	*	*	2	*	*	2	10	10	9	41
F	531 0-943-9755	RING, OIL X1440T59M (88663) (Part of PISTON RING SET, (88663) Part Number X1457T1 5A)	EA	1	*	*	2	*	*	2	10	10	9	42
F	5340-358-1213	RING, LOCK 3W1 1630 (88663)	EA	2	2	3	3	2	3	3	40	40	9	43
F	5805-631 -1640	PIN, PISTON 3W11866 (88663)	EA	1	*	*	2	*	*	2	10	10	9	44
2 F		PISTON, LOW PRESSURE 3W75295T60 (88663)	EA	1									9	45

SMR CODE	FEDERAL STOCK NUMBER	DESCRIPTION REF NUMBER & MFR CODE	USABLE ON CODE	(4) UNIT OF MEAS	(5) QTY INC IN UNIT	(6) 30-DAY DS MAINT ALLOWANCE			(7) 30-DAY GS MAINT ALLOWANCE			(8) 1-YR ALW PER 100 EQUIP CNTGY	(9) DEPO MAINT ALW PER 100 EQUIP	(10) ILLUS-TRATION	
						(a)	(b)	(c)	(a)	(b)	(c)			(e)	(b)
						1-20	21-50	51-100	1-20	21-50	51-100			FIG. NO.	ITEM NO.
F	5305-882-8260	SCREW, CAP, HEXAGON HEAD 35A21 C56 (73680)		EA	4									10	1
F		WASHER, STEEL X1016T33 (88663)		EA	4									10	2
2 F		COVER, SHAFT END 3W75293T20 (88663)		EA	1									10	3
F	4310-413-8523	SEAL, SHAFT END 24100-0353 (73680)		EA	1	*	*	2	*	*	2	10	10	10	4
F	5330-423-3436	GASKET 3W6925 (88663) (Part of GASKET SET, (88663) Part Number 3W96280)		EA	1	*	*	2	*	*	2	10	10	10	5
O	4730-428-2941	PLUG, OIL FILLER 3W82 (88663)		EA	1	*	*	2	*	*	2	10	10	10	6
O	5330-250-0226	PACKING, PREFORMED 20A11CM212 (88663) (Part of GASKET SET, (88663) Part Number 3W96280)		EA	1	*	*	2	*	*	2	10	10	10	7
F	5305-882-8260	SCREW, CAP, HEXAGON HEAD 35A2-1C56 (88663)		EA	6									10	8
F		WASHER, STEEL X1016T33 (88663)		EA	6									10	9
2 F		COVER, FRAME END 3W75292T20 (88663)		EA	1									10	10
1		GASKET 3R20621 (88663) (Part of GASKET SET, (88663) Part Number 3W96280)		EA	1									10	11
F	4310-247-6487	VALVE ASSEMBLY, PILOT 3W75289T10 (88663)		EA	1	*	*	2	*	*	2	10	10	10	12
F	4730-640-1 051	ELBOW TUBE 40015 (79470)		EA	1									10	13
F	4310-593-6631	SPRING, PILOT VALVE PP660 (88663)		EA	1	*	*	2	*	*	2	10	10	10	14
1		PLATE, PILOT VALVE SPRING 3W58780 (88663)		EA	1									10	15
1		BODY, PILOT VALVE 3W63625 (88663)		EA	1									10	16
2 F		NUT, LOCK, PILOT VALVE BODY 3W26431 (88663)		EA	1									10	17
F	4310-628-4276	SEAT, VALVE, PILOT VALVE 3W39900 (88663)		EA	1	*	*	2	*	*	2	10	10	10	18
F	5330-116-5810	PACKING, PREFORMED 20A11CM006 (88663) (Part of GASKET SET, (88663) Part Number 3W96280)		EA	1	*	*	2	*	*	2	10	10	10	19
2 F		PIN, THRUST 3W63623 (88663)		EA	1									10	20
F	4310-247-3230	CAP ASSEMBLY, CRANKPIN 3W75288T30 (88663)		EA	1	*	*		*		2	10	10	10	21
1		PLUNGER 3W75306 (88663)		EA	1									10	22
F	4310-257-2295	SPRING PP311 (88663)		EA	1	*	*		*		2	10	10	10	23

(1) SMR CODE	(2) FEDERAL STOCK NUMBER	(3) DESCRIPTION REF NUMBER & MFR CODE	(4) USABLE ON CODE UNIT OF MEAS	(5) QTY INC IN UNIT	(6) 30-DAY DS MAINT ALLOWANCE			(7) 30-DAY GS MAINT ALLOWANCE			(8) 1-YR ALW PER 100 EQUIP CNTGY	(9) DEPOT MAINT ALW PER 100 EQUIP	(10) ILLUS- TRATION	
					(a)	(b)	(c)	(a)	(b)	(c)			(a)	(b)
					1-20	21-50	51-100	1-20	21-50	51-100			FIG. NO.	ITEI NO.
K2 F		WIRE, LOCK 12GAX4 (88663)	EA	1										
K1		PIN 3W75308 (88663)	EA	2								10	24	
K1		WEIGHT 3W75307 (88663)	EA	2								10	25	
K2 F		WIRE, LOCK 20GAX5 (88663)	EA	1										
F		SCREW, LOCK 3W21297 (88663)	EA	2								10	26	
K1		CAP, CRANKPIN 3W75311 (88663)	EA	1								10	27	
P F	4310-247-3229	ROD, CONNECTING 3R33936 (88663)	EA	2	*	*	2	*	*	2	10	10	10	28
P H		BUSHING, CONNECTING ROD 3W75327 (88663)	EA	1				*	*	2	10	10	10	29
K2 F		CRANKSHAFT ASSEMBLY 3W75291 T30 (88663)	EA	1								10	30	
P F	3110-144-8527	BEARING BALL, INNER 306S (88663)	EA	1	*	*	2	*	*	2	6	6	10	31
P F	3110-144-8921	BEARING BALL, OUTER 206SG (88663)	EA	1	*	*	2	*	*	2	6	6	10	32
O		PLUG, PIPE, HEXAGON HEAD: 1/2-14 thd size 35A7B5 (88663)	EA	1								10	33	
K2 O		EXTENSION, DRAIN 3W75329 (88663)	EA	1								10	34	
K2 F		FRAME, CRANKCASE 3R2828P1 (88663)	EA	1								10	35	
GROUP 06 - RECEIVER AND FITTINGS														
O		NIPPLE, SERVICE LINE: 1/2 in. pipe, 1 1/8 in. lg 18A7W4 (88663)	EA	1								11	1	
O		BUSHING, REDUCER, SERVICE LINE: 1/2 in. x 1/4 in. 23A7B5 (88663)	EA	1								11	2	
O		TEE, PIPE: 1 x 1/2 x 1/2 in. (Female) 74A7M33 (88663)	EA	1								11	3	
O		NIPPLE, SERVICE LINE: 1 in. pipe, 1 1/2 in. lg 18A7W6 (88663)	EA	1								11	4	
O		BUSHING, REDUCER: 1 in. to 3/4 in. 23A7M5 (88663)	EA	1								11	5	
O	4730-289-3261	CONNECTOR, MALE, AFTERCOOLER 238X8 (79470)	EA	1								11	6	
2 O		ELBOW, STREET, AFTERCOOLER 100A7M3 (88663)	EA	1								11	7	
O		NIPPLE, AFTERCOOLER: 1/2 in. pipe, 3 in. lg 19A7W52 (88663)	EA	2								11	8	
2 O		ELBOW, STREET, AFTERCOOLER 102A7M3 (88663)	EA	1								11	9	
O		NIPPLE: 1 in. pipe, 1 1/2 in. lg 18A7W6 (88663)	EA	1								11	10	

(1) SMR CODE	(2) FEDERAL STOCK NUMBER	(3) DESCRIPTION REF NUMBER & MFR CODE	(4) USABLE ON CODE JNIT OF AEA	(5) QTY INC IN JNIT	(6) 30-DAY DS MAINT ALLOWANCE			(7) 30-DAY GS LOW.			(8) 1-YR ALW PER 100 QUIP NTGY	(9) DEPOT MAINT ALW PER 100 QUIP	(10) IL TR ON	
					(a)	(b)	(c)	(a)	(b)	(c)			(a)	(b)
					1-20	1-50	1-100	1-20	21-50	51-100			FIG NO.	TEH NO.
P F	4820-251-8561	VALVE, CHECK ASSEMBLY 3W75305T60 (88663)	EA	1	*	*	2	*	*	2	10	10	11	11
K1		BODY 3W11254P4 (88663)	EA	1									11	12
P F	4310-605-2219	DISC 3W11256 (88663)	EA	1	*	*	2	*	*	2	10	10	11	13
P F	5360-404-6267	SPRING PP458 (88663)	EA	1	*	*	2	*	*	2	10	10	11	14
C1		CAP 3W11255 (88663)	EA	1									11	15
O		BUSHING, REDUCER: 1 in. to 3/4 in. 23A7M5 (88663)	EA	1									11	16
O	4730-288-9953	CONNECTOR, TUBE, CONTROL DEVICE 234X5 (88663)	EA	1									11	17
C2 O		TUBE, CONTROL DEVICE 3W75211 T6 (88663)	EA	1									11	18
O		ELBOW, CONTROL DEVICE TUBE X15061 B5 (88663)	EA	1									11	19
O		ELBOW, STREET, DRAIN LINE: 1/4 in. pipe size, 90 deg 67A7M2 (88663)	EA	1									11	20
C2 O		COCK, DRAIN 145 (79470)	EA	1									11	21
O		PLUG, PIPE: 3/4 in. pipe size 31A7M6 (88663)	EA	1									11	22
O		PLUG, PIPE: 1 in. pipe size 31A7M7 (88663)	EA	1									11	23
C2 O		RECEIVER 3R491 B2 (88663)	EA	1									11	24
		GROUP 07 - REPAIR PARTS, KITS AND SETS												
P F	4310-472-9287	RING SET, PISTON 3W34452 (88663)	EA	1	*	2	2	*	2	2	10	10		
		2 EA, RING, COMPRESSOR X1440T38B (88663)											9	17
		1 EA, RING, OIL X1440T38H (88663)											9	18
		1 EA, RING, OIL X1440T38M (88663)											9	19
P F		RING SET, PISTON X1457T1 5A (88663)	EA	1										
		2 EA, RING, COMPRESSOR X1440T59B (30760) FSN 4310-918-1343											9	20
		1 EA, RING, OIL X1440T59H (30760) FSN 4310-445-5333											9	21
		1 EA, RING, OIL X1440T59M (88663) FSN 4310-943-9755											9	22
P F	5330-404-6319	GASKET SET: compressor 3W96280 (88663)	EA	1	*	*	2	*	*	2	10	10		
		1 EA, GASKET 3W6925 (88663) FSN 5330-423-3436											10	5

(1) SMR CODE	(2) FEDERAL STOCK NUMBER	(3) DESCRIPTION USABLE ON CODE REF NUMBER & MFR CODE	(4) UNIT OF MEAS	(5) QTY INC IN UNIT	(6) 30-DAY DS MAINT ALLOWANCE			(7) 30-DAYS MAINT ALLOWANCE			(8) 1-YR ALW PER 100 EQUIP CNTGY	(9) DEPOT MAINT ALW PER 100 EQUIP	(10) ILLUS- TRATION	
					(a)	(b)	(c)	(a)	(b)	(c)			(a)	(b)
					1-20	21-50	51-100	1-20	21-50	51-100			FIG. NO.	ITEM NO.
		1 EA, GASKET 3R40621 (88663)											10	11
		1 EA, PACKING, PREFORMED 20A11CM212 (88663) FSN 5330-250-0226											10	7
		1 EA, PACKING, PREFORMED 20A11CM006 (88663) FSN 5330-292-0580											10	19
		2 EA, GASKET 3W75331 (88663) FSN 5330-871-8344											9	15
		1 EA, GASKET 3W75331 (88663) FSN 5330-871-8344											9	38
		1 EA, GASKET 3W6293 (88663) FSN 4310-423-3440											9	34
		2 EA, GASKET 3W6921 (88663) FSN 4310-413-8528											9	25
		2 EA, GASKET 3W11340 (88663) FSN 5330-413-1560											9	10
		2 EA, GASKET 3W6870 (88663) FSN 4310-423-3574											9	3

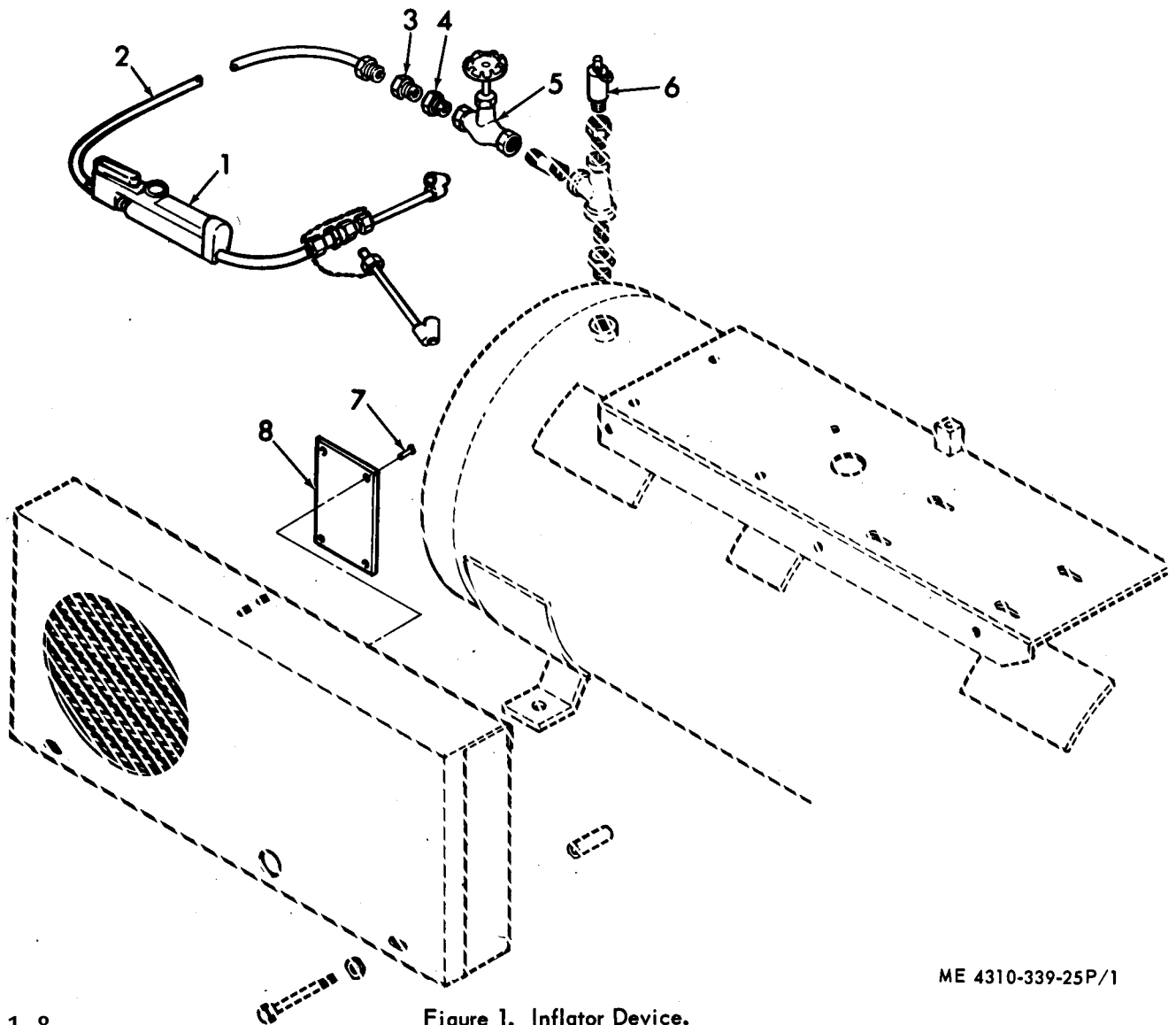
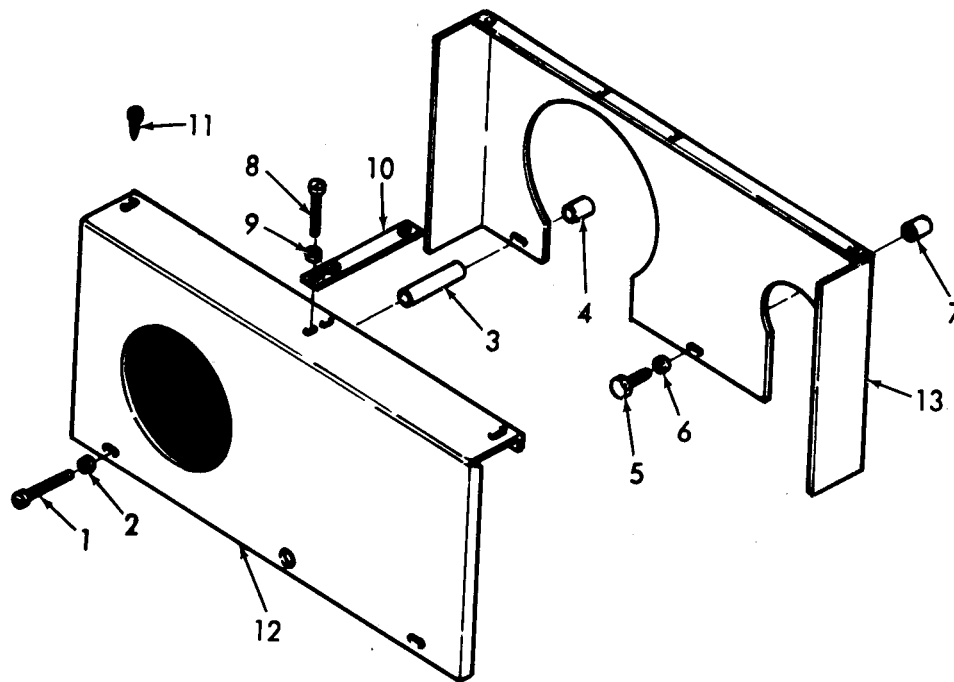


Figure 1. Inflator Device.



ME 4310-339-25P/2

Figure 2. Belt Guard Assembly.

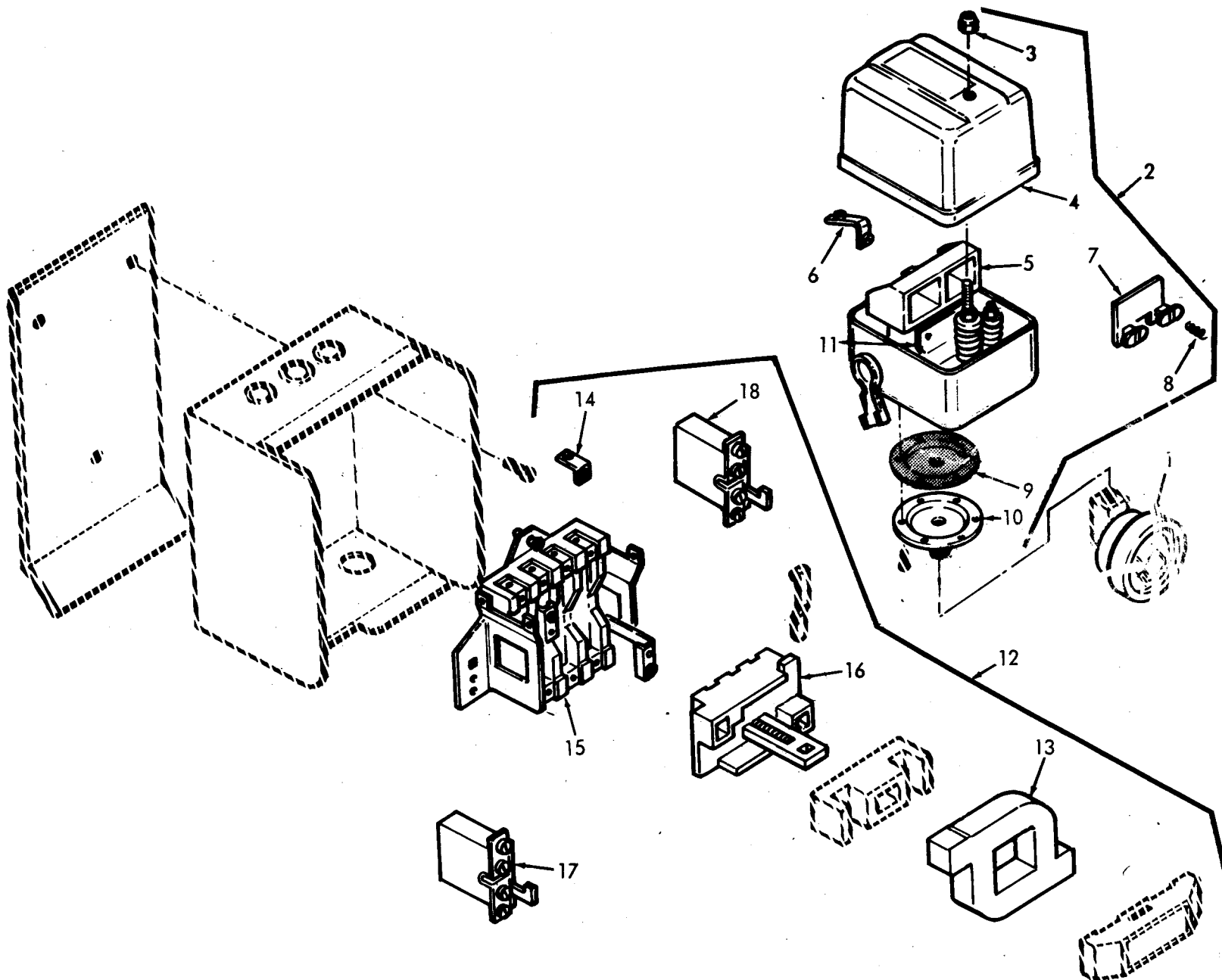
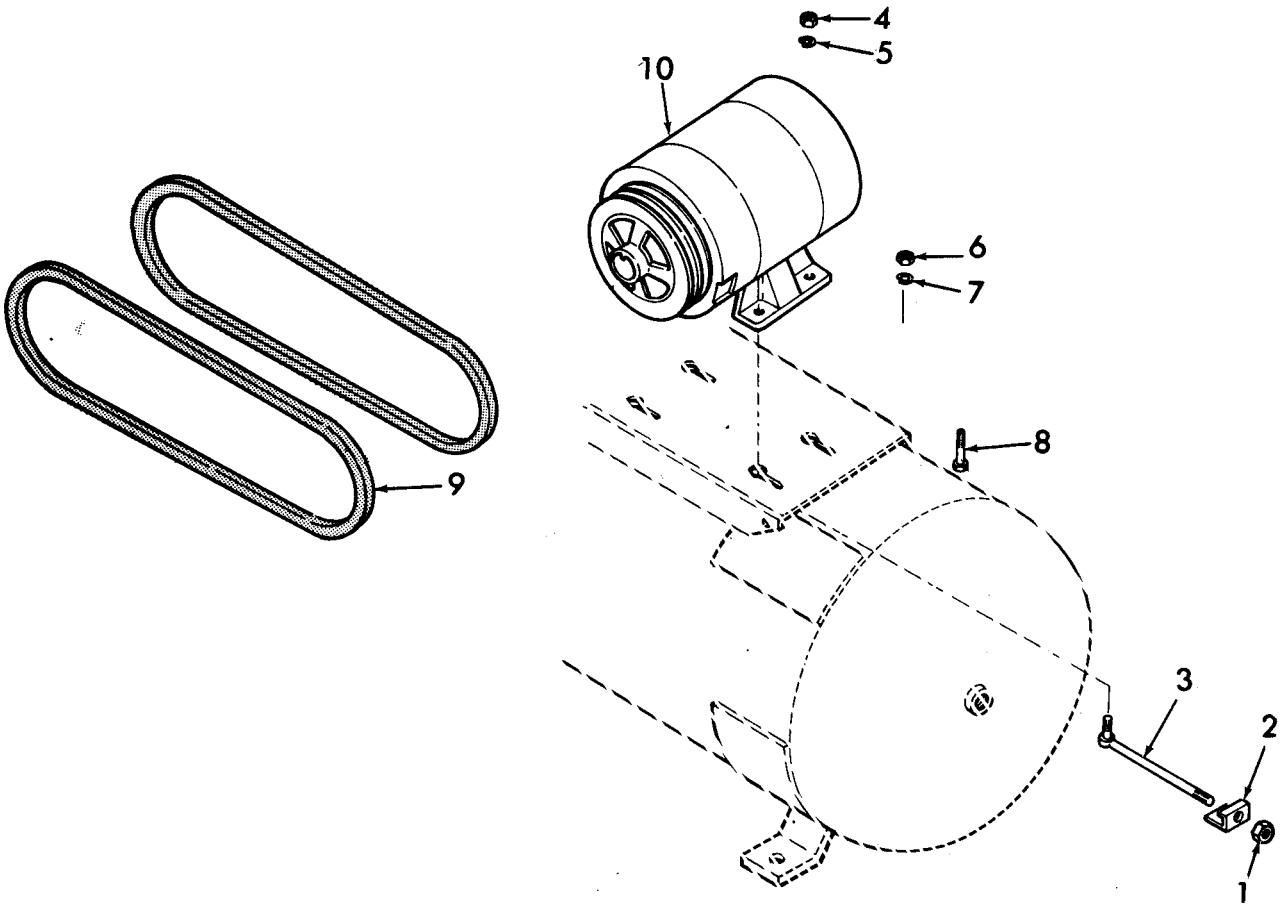


Figure 3. Controls and Instruments.

ME 4310-339-25P/3



ME 4310-339-25P/4

Figure 4. Motor Assembly.

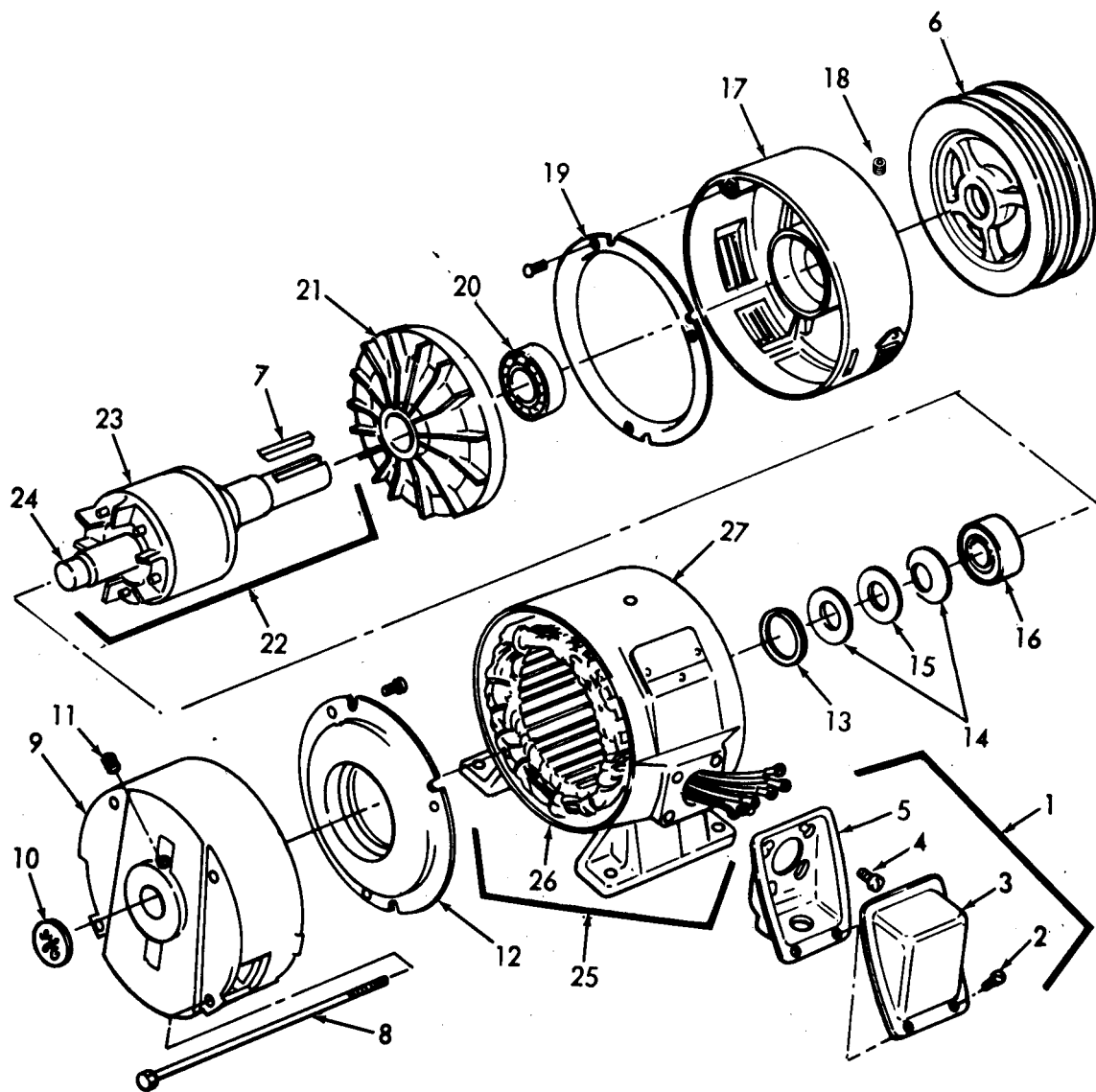


Figure 5. Motor Assembly.

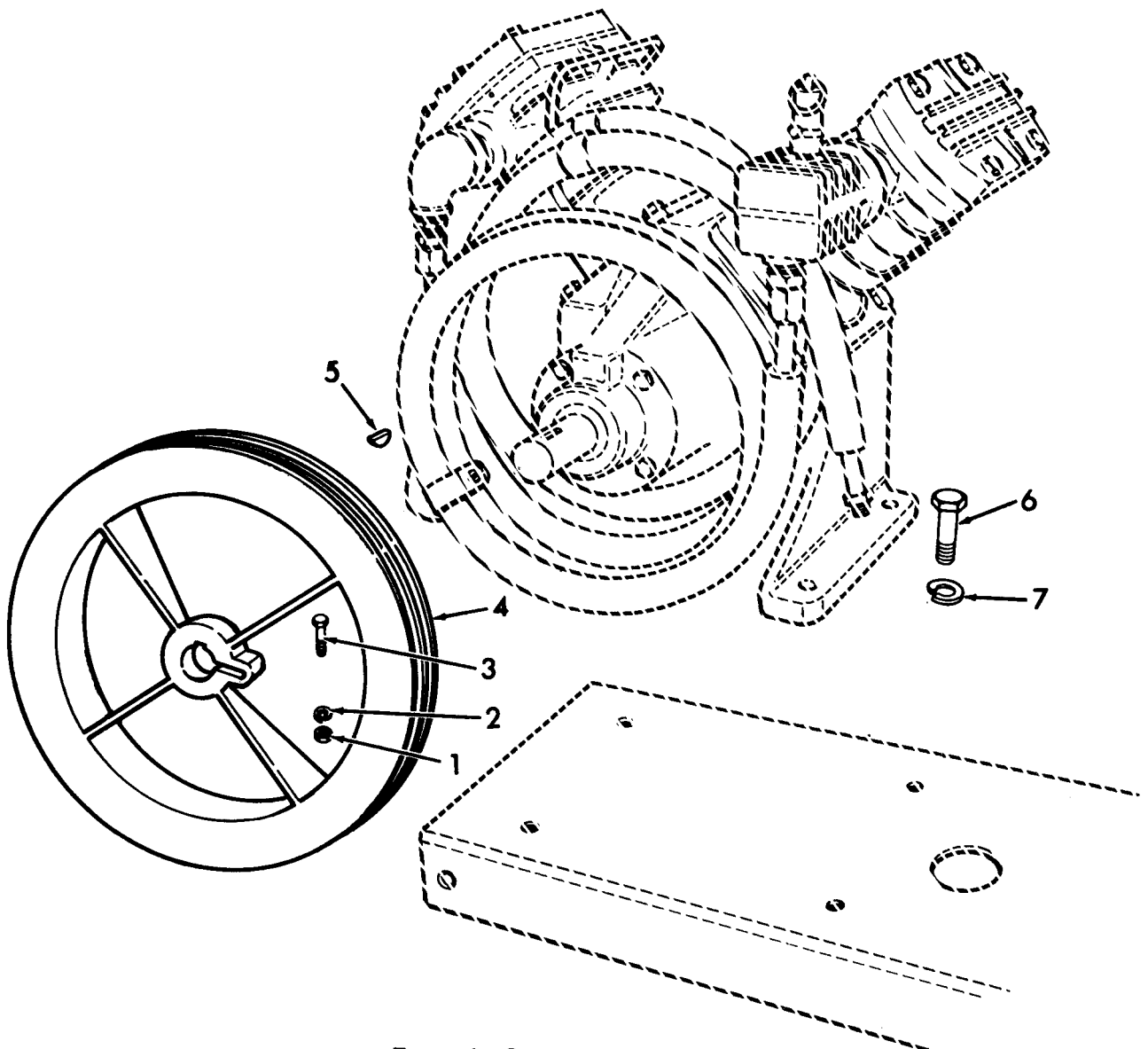
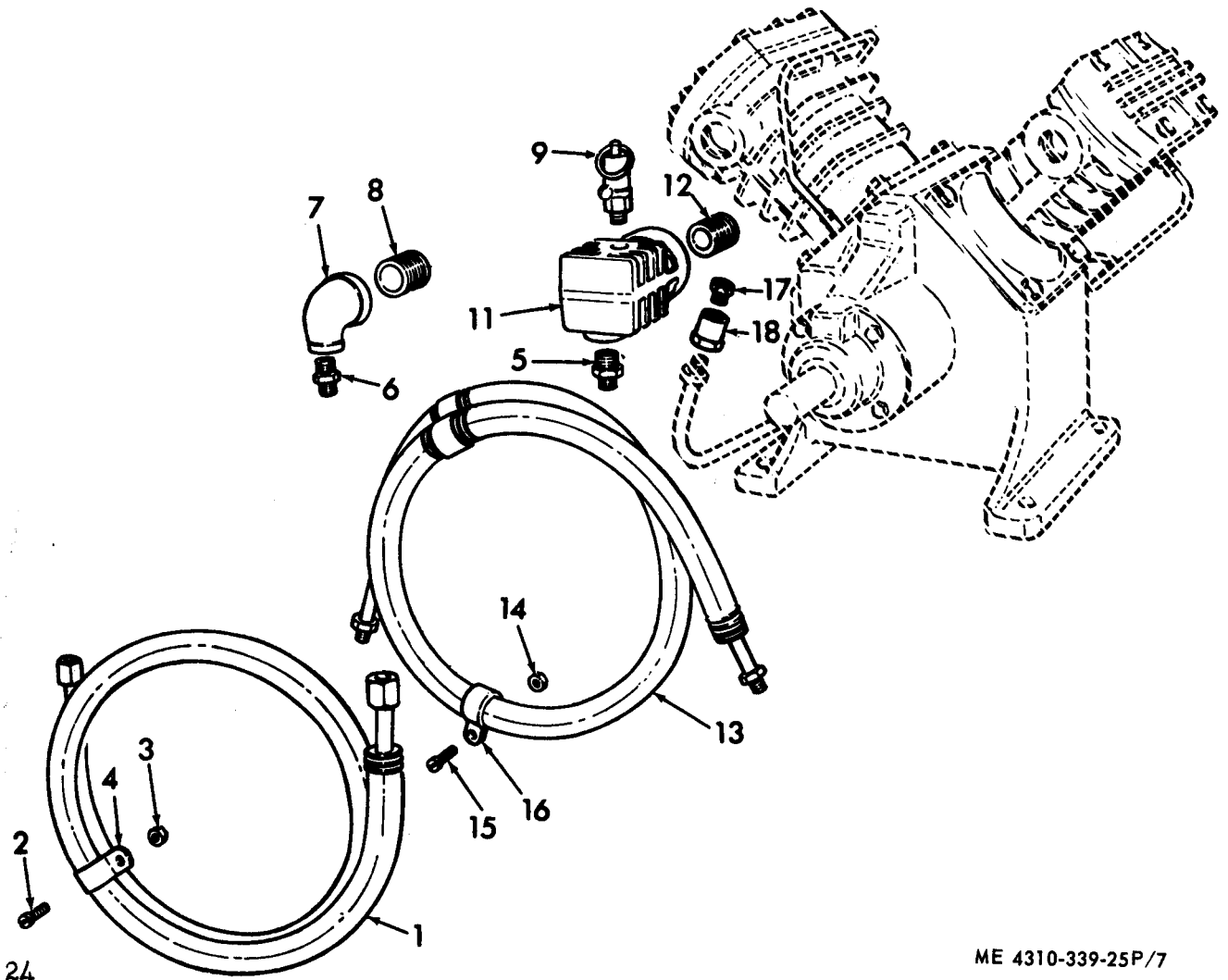


Figure 6. Compressor Pulley.



ME 4310-339-25P/7

Figure 7. Innercooler and Aftercooler.

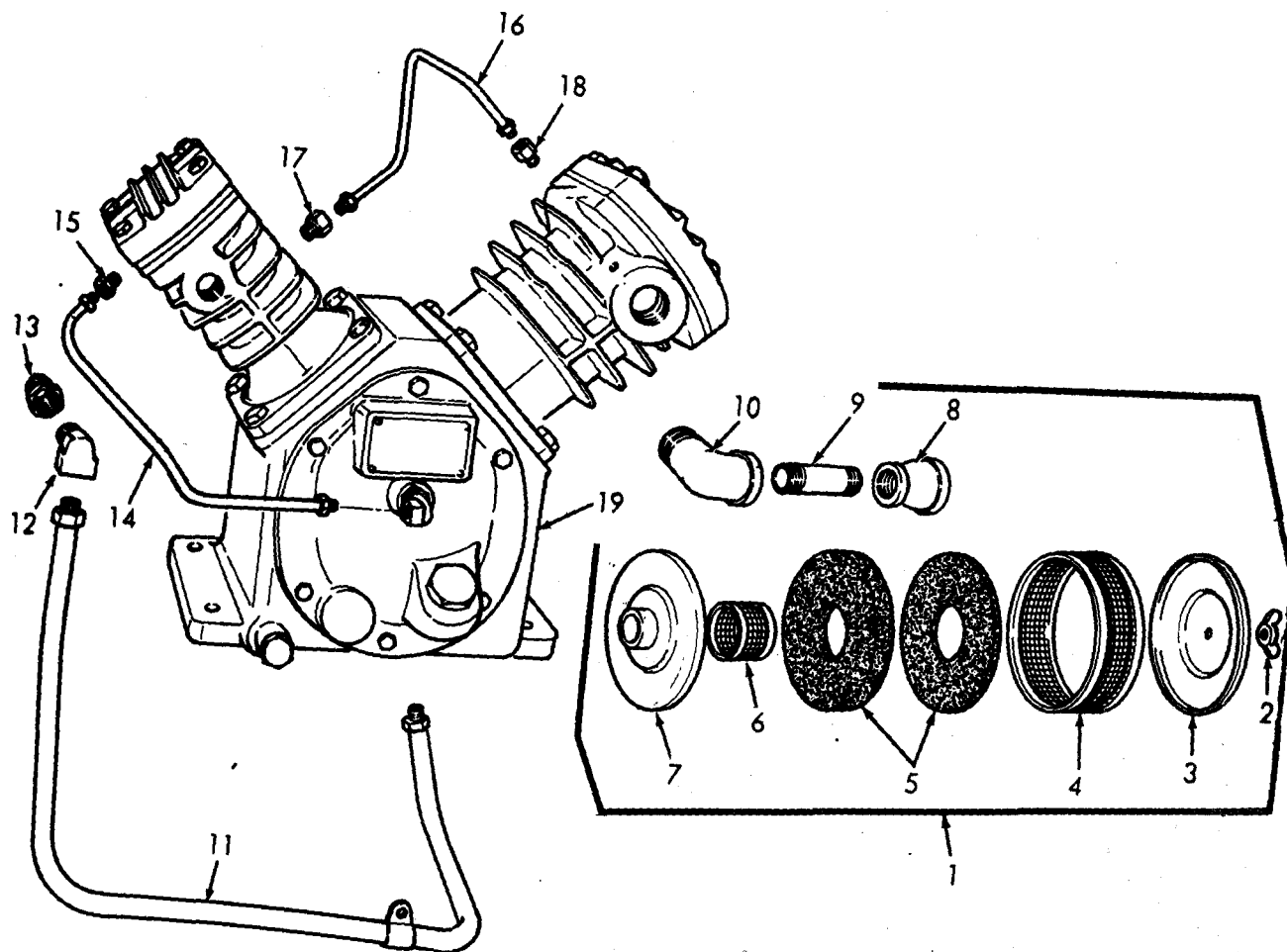


Figure 8. Air Filter, Discharge Line and Vent Tube

ME 4310-339-25P/8

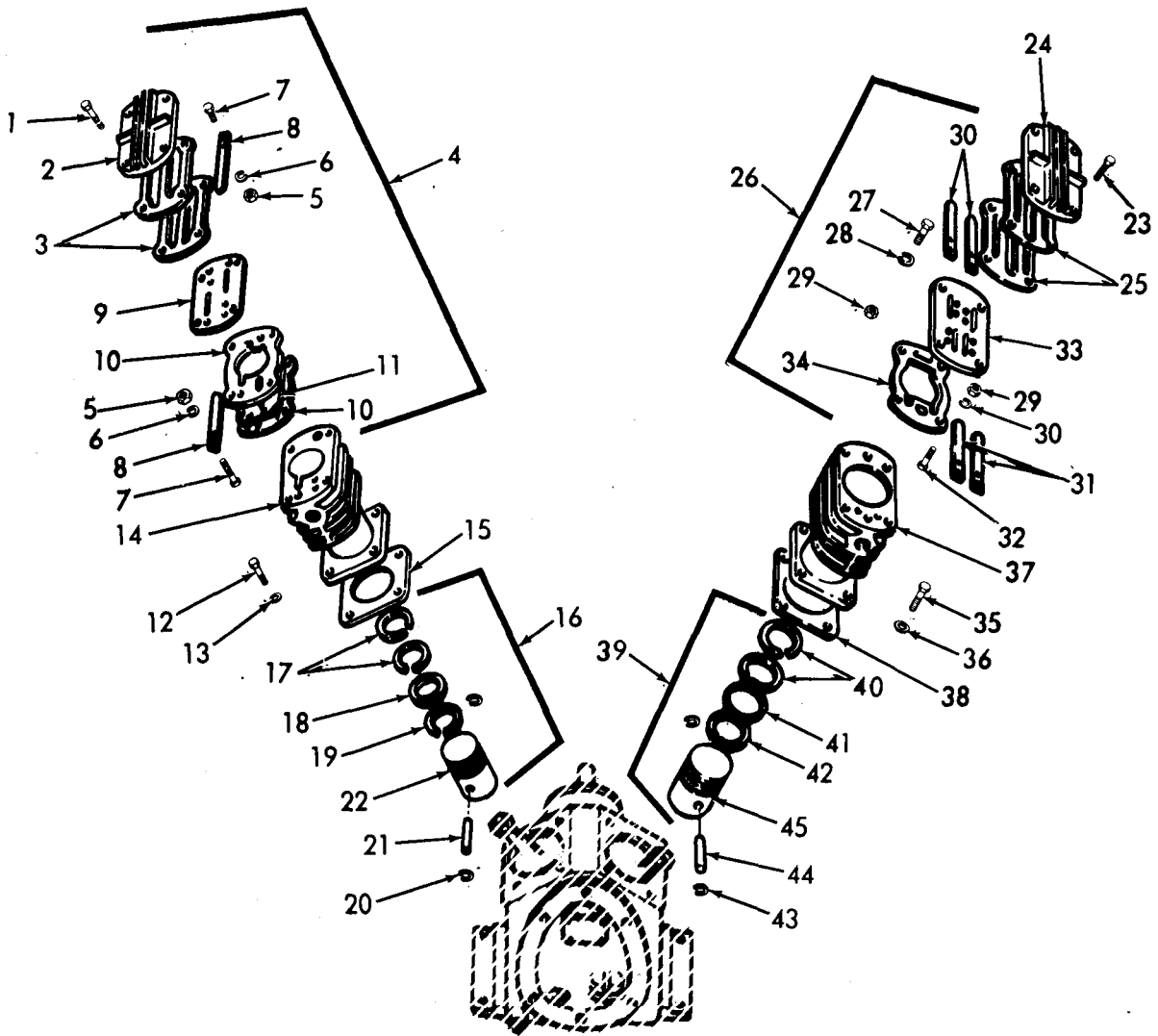


Figure 9. Primary Cylinder and Secondary Cylinder.

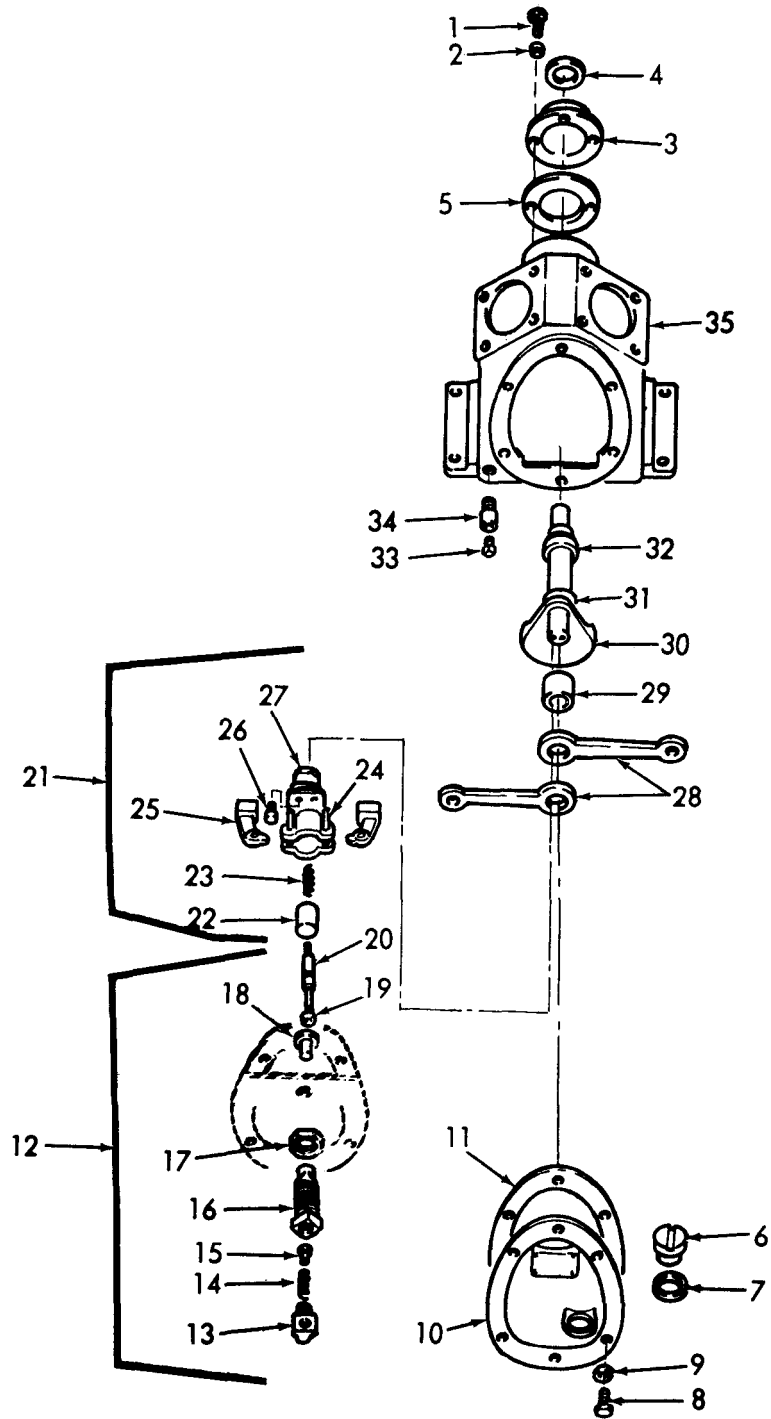


Figure 10. Pilot Valve, Connecting Rods, Crankshaft and Frame.

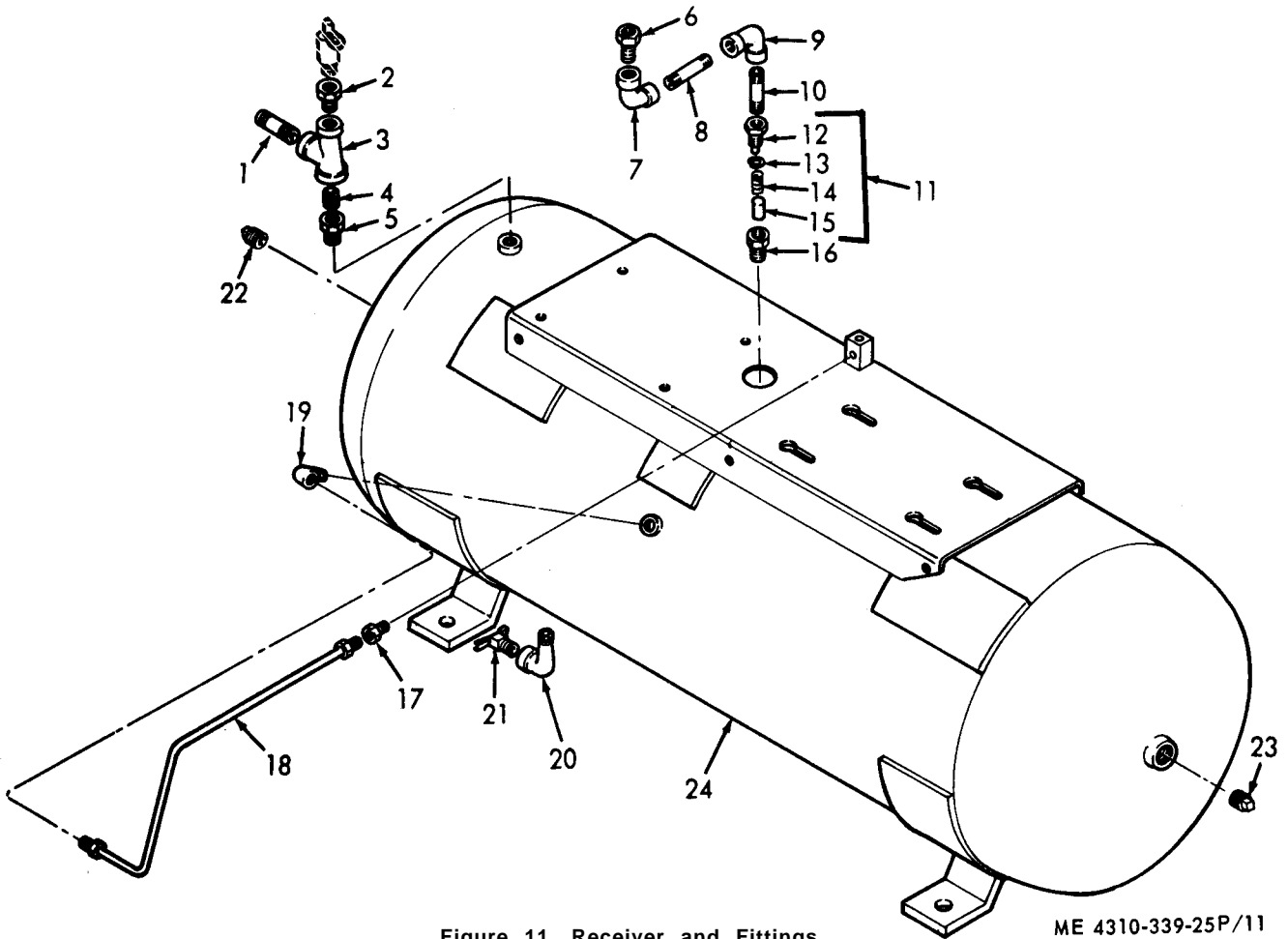


Figure 11. Receiver and Fittings.

ME 4310-339-25P/11

SECTION VII. INDEX-FEDERAL STOCK NUMBER AND REFERENCE NUMBER
CROSS-REFERENCE TO FIGURE AND ITEM NUMBER

<u>STOCK NUMBER</u>	<u>FIGURE NO.</u>	<u>ITEM NO.</u>	<u>STOCK NUMBER</u>	<u>FIGURE NO.</u>	<u>ITEM NO.</u>
2805-631-1640	9	44	5305-042-6417	6	6
3030-785-4419	4	9			
3110-144-8527	10	31	5305-069-5577	2	5
3110-144-8921	10	32	5305-071-1776	6	3
3110-965-6664	5	20	5305-071-2069	9	23
4310-012-7878	8	5	5305-269-2804	9	12
4310-247-3229	10	28	5305-269-2804	9	35
4310-247-3230	10	21	5305-269-3206	2	8
4310-247-6487	10	12	5305-269-3215	9	1
4310-253-0870	9	19	5305-582-6378	7	3
4310-257-2295	10	23			
4310-413-1562	9	21	5305-882-8260	10	1
4310-413-8523	10	4	5305-882-8260	10	8
4310-413-8528	9	25			
4310-423-3440	9	34			
4310-423-3574	9	3			
4310-423-3576	9	8			
4310-423-3576	9	31			
4310-445-5333	9	41			
4310-445-5333	9	41			
4310-472-9287	9	17	5310-266-0387	6	1
4310-593-6631	10	14	5310-298-9271	4	4
4310-605-2219	11	13	5310-298-9271	4	6
4310-606-3678	7	9			
4310-628-4276	10	18			
4310-736-0093	9	18			
4310-918-1343	9	40	5310-584-5272	6	7
4310-943-9755	9	42	5310-595-6690	9	13
4720-253-0872	1	2	5310-595-6690	9	36
4730-013-7409	7	5			
4730-050-1155	7	8			
4730-050-1155	7	12			
4730-193-0879	8	13	5315-043-1789	6	5
4730-202-9554	7	18	5330-116-5810	10	19
4730-277-8289	1	3	5330-250-0226	10	7
4730-277-8768	8	15	5330-292-0580	10	19
4730-277-8768	8	17	5330-413-1560	9	10
4730-277-8768	8	18	5330-423-3436	10	5
4730-277-9166	8	12	5330-871-8344	9	15
4730-288-9953	11	17	5330-871-8344	9	38
4730-289-3261	7	6	5340-358-1213	9	20
4730-289-3261	7	17	5340-358-1213	9	43
4730-289-3261	11	6	5360-404-6267	11	14
4730-428-2941	10	6	5930-802-2285	3	2
4730-640-1051	10	13	5945-383-2557	3	18
4730-816-5744	5	11	5945-444-9377	3	17
4730-816-5744	5	18	5950-678-3733	3	13
4820-251-8561	11	11	6105-236-6300	4	10
4910-204-2644	1	1	6110-222-8257	3	12
			6110-790-5530	3	14
			6685-527-7187	3	1

<u>REFERENCE NO.</u>	<u>MFG CODE</u>	<u>FIG NO.</u>	<u>ITEM NO.</u>	<u>REFERENCE NO.</u>	<u>MFG CODE</u>	<u>FIG NO.</u>	<u>ITEM NO.</u>
A78SET2	73842	4	9	MS35338-48		6	7
CR106C1 03	24446	3	12	MS35756-3	96906	6	5
CR123C1 3-7B	02295	3	18	MS90725-113	96906	6	6
CR1 23 C27-3B	02295	3	17	N112P16006B1 1	03510	5	4
GGG9TYPE3CLASSASTYLE	81348	1	1	N44P21006B1 1	03510	5	2
LIST46069	88663	8	19	PP311	88663	10	23

SECTION VII. INDEX-FEDERAL STOCK NUMBER AND REFERENCE NUMBER
CROSS-REFERENCE TO FIGURE AND ITEM NUMBER (Continued)

<u>REFERENCE NO.</u>	<u>MFG CODE</u>	<u>FIG NO.</u>	<u>ITEM NO.</u>	<u>REFERENCE NO.</u>	<u>MFG CODE</u>	<u>FIG. NO.</u>	<u>ITEM NO.</u>
PP458	-	11	14	20A11CM006	88663	10	19
PP660	88663	10	14	20A11CM212	88663	10	7
X1016T124C	88663	9	30	200X5	79470	8	15
X1016T33	88663	10	2	200X5	79470	8	17
X1016T33	88663	10	9	200X5	79470	8	18
X1016T35	88663	9	13	200X8	79470	7	5
X1016T35	88663	9	36	206SG	88663	10	32
X1396T28-200	88663	1	6	23A7M5	88663	1	4
X1396T28-60	-	7	9	23A7M5	88663	11	5
X1429T312X6	88663	4	3	23A7M5	88663	11	16
X1440T38B	88663	9	17	23A7M7	88663	8	13
X1440T38H	88663	9	18	23A7G5	88663	11	2
X1440T38M	88663	9	19	234X5	88663	11	17
X1440T59B	30760	9	40	238X8	79470	7	6
X1440T59H	30760	9	41	238X8	79470	7	17
X1440T59M	88663	9	42	238X8	79470	11	6
X15061E5	88663	11	19	24100-0353	73680	10	4
100A7M3	88663	11	7	252X10	79470	7	18
102A7M3	88663	11	9	2554B9X2	19804	3	4
102D1003AAP1	03510	5	17	2554C7G2	19804	3	5
102D1004AAP1	03510	5	9	2554D28G1	19804	3	9
113D252AAP1	03510	5	27	2554G12	19804	3	6
114C461AAP1	03510	5	3	2554G13	19804	3	7
114C460AAP1	03510	5	5	2821D5G2	19804	3	11
1317D8G10	19804	3	10	3A12N37	88663	3	1
14A4C11	88663	7	2	3H12720P2	88663	2	13
14A4C11	88663	7	14	3H2828P1	88663	10	35
14A5C101	88663	6	2	3R33936	88663	10	28
14A5C55P	88663	9	6	3R40621	88663	10	11
14A5C55P	88663	9	28	3R49182	88663	11	24
14A5C76	88663	2	2	3R8174	88663	6	4
14A5C76	88663	2	6	3W103103	88663	8	1
14A5C76	88663	2	9	3W11254P4	88663	11	12
14A5C76	88663	4	5	3W11255	88663	11	15
14A5C76	88663	4	7	3W11256	88663	11	13
145	79470	11	21	3W11261	88663	4	2
145B1200ABG1	03510	5	25	3W11340	88663	9	10
145B185AAP1	03510	5	21	3W11559P1	88663	7	11
145B200ABG1	03510	5	22	3W11629	88663	9	21
145B2300ABG1	03510	5	23	3W11630	88663	9	20
145B2403AAP1	03510	5	24	3W11630	88663	9	43
149A5600AAP1	03510	5	12	3W11866	88663	9	44
149A5600ABP1	03510	5	19	3W21297	88663	10	26
15D21G3	02295	3	13	3W21477	88663	8	6
1537X4	19804	3	8	3W21479	88663	8	5
16A4C1P	88663	9	5	3W21779	88663	8	4
16A4C1P	88663	9	27	3W26431	88663	10	17
16A4C3	88663	4	4	3W34037	88663	8	3
16A4C3	88663	4	6	3W34042	88663	8	7
16A4C5	88663	4	1	3W39900	88663	10	18
16A4C5	88663	6	1	3W58780	88663	10	15
17A2C134	88663	2	1	3W6293	88663	9	34
18A7M5	88663	8	9	3W63623	88663	10	20
18A7W4	88663	11	1	3W63625	88663	10	16
18A7W5	88663	11	4	-	88663	9	3
18A7W6	88663	11	10	3W6874	88663	9	8
186A2001DA	03510	5	26	3W6874	88663	9	31
19A7W24	88663	7	8	3W6921	88663	9	25
19A7W24	88663	7	12	3W6923	88663	9	34
19A7W52	88663	11	8	3W6925	88663	10	5

SECTION VII. INDEX-FEDERAL STOCK NUMBER AND REFERENCE NUMBER
CROSS-REFERENCE TO FIGURE AND ITEM NUMBER (Continued)

<u>REFERENCE NO.</u>	<u>MFG CODE</u>	<u>FIG NO.</u>	<u>ITEM NO.</u>	<u>REFERENCE NO.</u>	<u>MFG CODE</u>	<u>FIG NO.</u>	<u>ITEM NO.</u>
3W75211T6	88663	11	18	306S	88663	10	31
3W75259T1	88663	8	16	31A7M6	88663	11	22
3W75259T2	88663	8	14	31A7M7	88663	11	23
3W75288T30	88663	10	21	3325X4	79470	1	3
3W75289T10	88663	10	12	35A2-1C107	88663	2	8
3W75291T30	88663	10	30	35A2-1C115	88663	4	8
3W75292T20	88663	10	10	35A2-1C116	88663	9	1
3W75293T20	88663	10	3	35A2-1C119	88663	2	5
3W75295T40	88663	9	22	35A2-1C218	88663	9	12
3W75295T4OR	88663	9	16	35A2-1C218	88663	9	35
3W75295T60	-	9	45	35A2-1C221	88663	9	23
eW75295T6OR	88663	9	39	35A2-1C231	88663	6	3
3W75296T70	88663	9	14	35A2-1C56	88663	10	8
3W75296T90	88663	9	37	35A21C56	73680	10	1
3W75299T40	88663	9	26	35A7B5	88663	10	33
3W75299T4OS	88663	9	33	3503W32001	19804	3	3
3W75302T30	88663	9	2	39A13N406	88663	1	7
3W75302T40	88663	9	24	40015	79470	10	13
3W75305T60	88663	11	11	402X12	79470	8	12
3W75306	88663	10	22	5K213AK202	03510	4	10
3W75307	88663	10	25	511L122AAG1	03510	5	1
3W75308	88663	10	24	546A301G17	02295	3	15
3W75311	88663	10	27	546A301G19	02295	3	16
3W75327	88663	10	29	546A301G2	02295	3	14
3W75329	88663	10	34	67A7M2	88663	11	20
3W75331	88663	9	15	67A7M6	88663	8	10
3W75331	88663	9	38	69A7M1 0	88663	7	7
3W75410T2	12168	1	5	732A301ALP3	03510	5	13
3W75424T9	88663	2	10	732A302AHP1	03510	5	15
3W75479T20	88663	2	3	732A303ANP	03510	5	14
3W75479T7	88663	2	4	732A502AMP2	03510	5	20
3W75479T7	88663	2	7	732A503AEP1	03510	5	16
3W82	88663	10	6	734A550AWP35	03510	5	7
3W95993	88663	1	2	734A581ACP1	03510	5	10
3W96007	88663	1	8	734A586AAP52	03510	5	8
3W96142	88663	9	11	734A589AAP1	03510	5	11
3W96149	88663	7	13	734A589AAP1	03510	5	18
3W96150	88663	8	11	74A7M33	88663	11	3
3W96259	88663	9	4	79A7M1 4	88663	8	8
3W96260	88663	9	9	81 A4C9	88663	8	2
3W96261	88663	5	6	83 A2C30	88663	7	3
3W96279	88663	7	4	83A2C30	88663	7	15
3W96279	88663	7	16	87A2C114P	88663	9	32
3W96281	88663	2	11	87A2C144P	88663	9	7
3W96385	88663	2	12	87A2C144P	88663	9	29
30A7M4	88663	7	10	9013GHG2	19804	3	2

PARTS NOT ILLUSTRATED

<u>STOCK NUMBER</u>	<u>PAGE</u>	<u>STOCK NUMBER</u>	<u>PAGE</u>	<u>STOCK NUMBER</u>	<u>PAGE</u>
431 0-472-9287	16	4730-288-9386	10	5330-404-6319	16

<u>REFERENCE NO.</u>	<u>MFG CODE</u>	<u>PAGE</u>	<u>REFERENCE NO.</u>	<u>MFG CODE</u>	<u>PAGE</u>
TC2228	03510	7	X15061N8	88663	11
X1434T51	88663	10	1 -20DX035WX60LCO	88663	10
X1457T15A	88663	16	105X8	79470	10

SECTION VII. INDEX-FEDERAL STOCK NUMBER AND REFERENCE NUMBER
 CROSS REFERENCE TO FIGURE AND ITEM NUMBER (Continued)

<u>REFERENCE NO.</u>	<u>MFG CODE</u>	<u>PAGE</u>	<u>REFERENCE NO.</u>	<u>MFG CODE</u>	<u>PAGE</u>
12GAX4	88663	15	3W103501S3	88663	8
144A24B3	88663	8	3W103502B10-29	88663	8
20GAX5	88663	15	3W103504B2	88663	8
225A24U75	88663	8	3W103506F17	88663	8
228A24U75	88663	8	3W103507-1	88663	8
2554D5G1	19804	7	3W34452	88663	16
3R49391	88663	8	3W96006	88663	6
3R49392	88663	7	3W96280	88663	16
3W103499B14-6	88663	8	546A301G18	02295	7
3W103499B1427	88663	8	9998PC2	19804	7
3W103501S1	88663	7			

By Order of the Secretary of the Army:

Official:

KENNETH G. WICKHAM,
Major General, United States Army,
The Adjutant General.

W. C. WESTMORELAND,
General, United States Army,
Chief of Staff.

Distribution:

To be distributed in accordance with DA Form 12-25, Section I, (qty rqr block no. 18) organizational maintenance requirements for Air Compressors: 15 CFM.

TM 5-4310-339-25P COMPRESSOR, RECIPROCATING, AIR, 15CFM, 175PSI - 1970

02 6832